

WAAS CH 82746	APP CRS 067°	Rwy Idg TDZE Apt Elev	5031 690 690
-------------------------	------------------------	-----------------------------	---

RNAV (GPS) RWY 7

ALPENA COUNTY RGNL (APN)

RNP APCH - GPS.

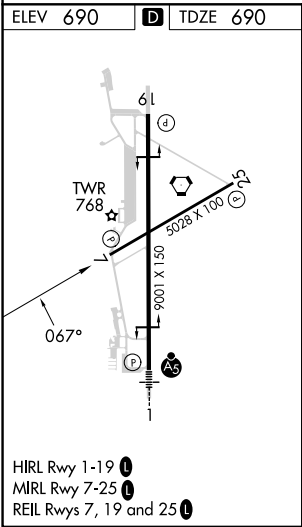
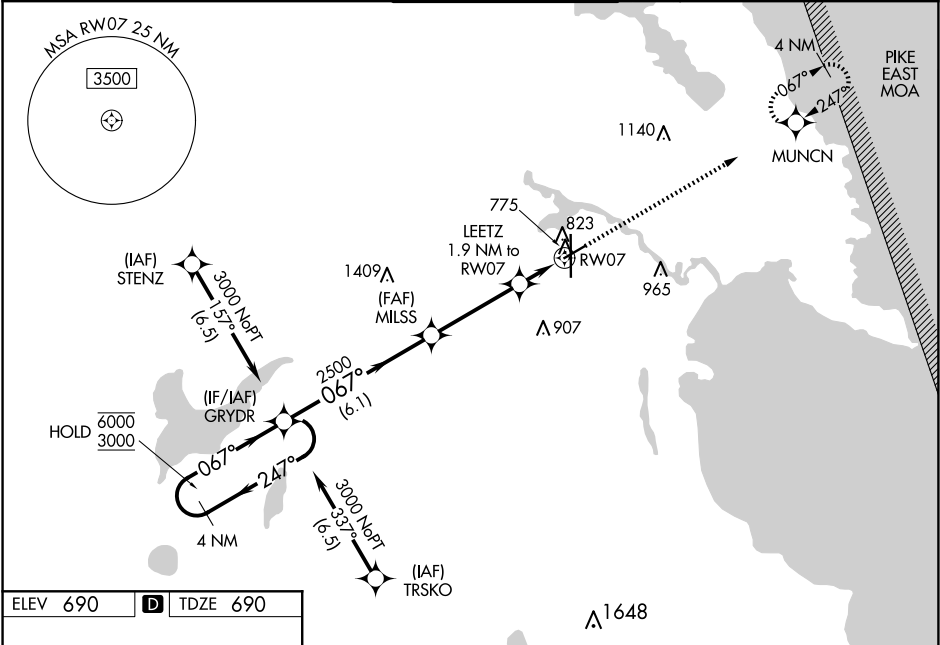
▼

▲

Baro-VNAV and VDP NA when using PZQ altimeter setting. Rwy 7 helicopter visibility reduction below ¾ SM NA. For uncompensated Baro-VNAV systems, LNAV/VNAV NA below -18°C or above 54°C. When local altimeter setting not received, use PZQ altimeter setting and increase LPV DA to 1007 feet, increase LNAV/VNAV DA to 1039 feet; increase all MDAs 60 feet and LNAV visibility Cat C/D ¼ SM.

MISSED APPROACH:
Climb to 3000 direct MUNCN and hold, continue climb-in-hold to 3000.

ATIS ★	ALPENA APP CON ★	ALPENA TOWER ★	GND CON	UNICOM
120.675 327.05	128.425 379.3	121.35 (CTAF) 0 318.1	121.9 275.8	122.95



4 NM Holding Pattern GRYDR				VGSI and RNAV glidepath not coincident (VGSI Angle 3.00/TCH 49).		3000	MUNCN
<div>6000 ← 247°</div> <div>3000 → 067°</div>				<div>067°</div> <div>2500</div> <div>1340</div>		<div>1.9 NM to RW07</div> <div>1.1 NM to RW07</div> <div>RW07</div>	
GP 3.00° TCH 58				6.1 NM		3.6 NM	0.8 NM
CATEGORY	A	B	C	D			
LPV DA	952-1		262 (300-1)				
LNAV/VNAV DA	984-1		294 (300-1)				
LNAV MDA	1080-1	390 (400-1)	1080-1½	390 (400-1½)			
CIRCLING	1140-1	450 (500-1)	1220-1½	530 (600-1½)	1300-2	610 (700-2)	