

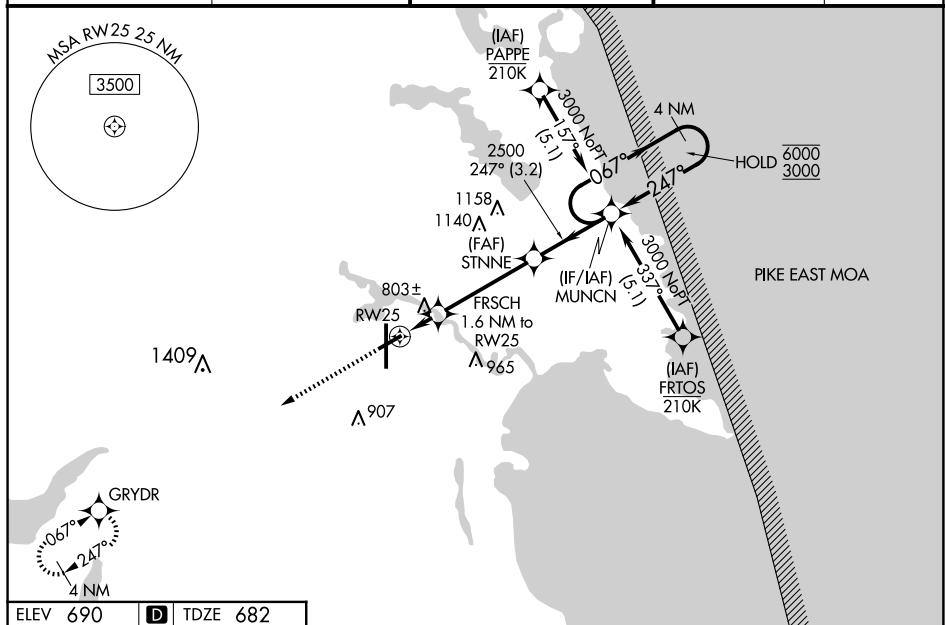
24361

RNAV (GPS) RWY 25  
ALPENA COUNTY RGNL (APN)

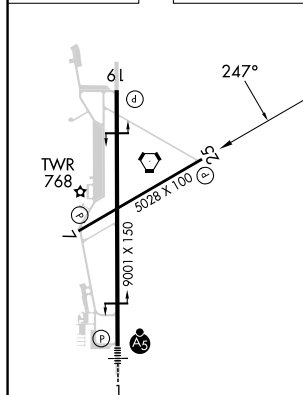
**T** For uncompensated Baro-VNAV systems, LNAV/VNAV NA below -19°C or above 54°C. Rwy 25 helicopter visibility reduction below  $\frac{3}{4}$  SM. Baro-VNAV and VDP NA when using PZQ altimeter setting. When local altimeter setting not received, use PZQ altimeter setting and increase LPV DA to 1018 feet; increase LNAV/VNAV DA to 1115 feet and all visibilities  $\frac{1}{4}$  SM. Increase all MDAs 60 feet and LNAV visibility Cat C/D  $\frac{1}{4}$  SM.

**MISSED APPROACH:**  
Climb to 3000 direct  
GRYDR and hold.

ATIS★ 120.675 327.05	ALPENA APP CON★ 128.425 379.3	ALPENA TOWER★ 121.35 (CTAF) 0 318.1	GND CON 121.9 275.8	UNICOM 122.95
-------------------------	----------------------------------	--	------------------------	------------------



ELEV 690	<b>D</b>	TDZE 682
----------	----------	----------



HIRL Rwy 1-19 **L**  
MIRL Rwy 7-25 **L**  
REIL Rwy 7, 19 and 25 **L**

CATEGORY	A	B	C	D
LPV DA		963-1	281 (300-1)	
LNAV/VNAV DA		1060-1	378 (400-1)	
LNAV MDA		1060-1	378 (400-1)	
CIRCLING	1140-1	450 (500-1)	1220-1½ 530 (600-1½)	1300-2 610 (700-2)

ALPENA COUNTY RGNL (APN)  
RNAV (GPS) RWY 25

EC-1, 07 AUG 2025 to 04 SEP 2025