

WAAS CH 50310 W01A	APP CRS 007°	Rwy Idg TDZE 685 Apt Elev 690
--	------------------------	---

RNAV (GPS) RWY 1
ALPENA COUNTY RGNL (APN)

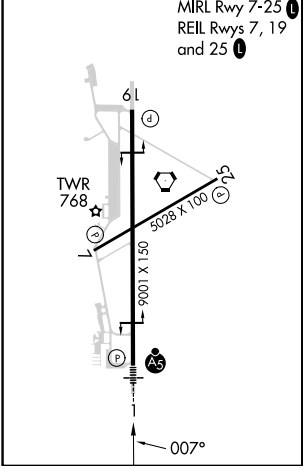
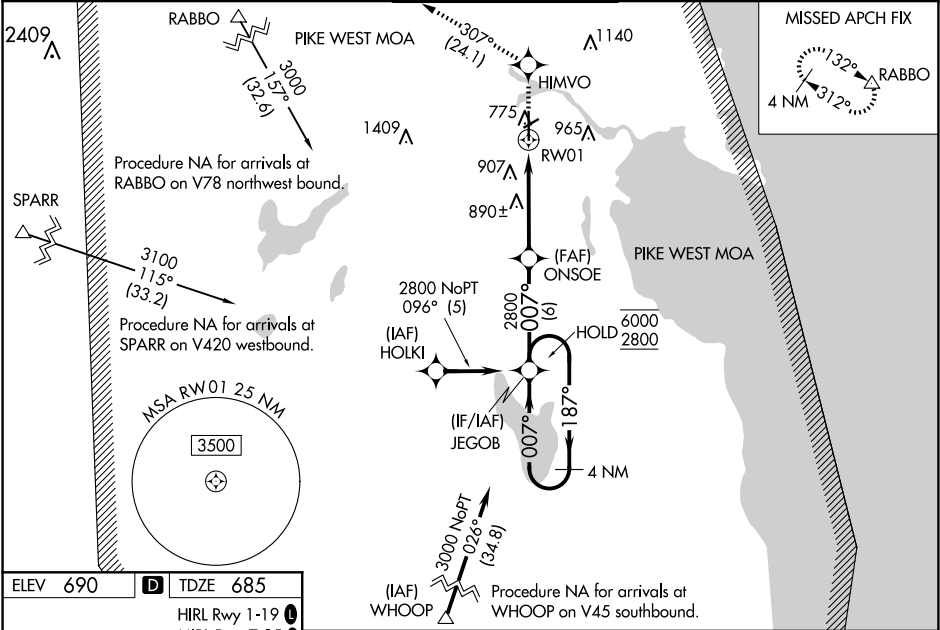
RNP APCH - GPS.

For uncompensated Baro-VNAV systems, LNAV/VNAV NA below -16°C or above 54°C. Baro-VNAV and VDP NA when using PZQ altimeter setting. For inop ALS, increase LPV all Cats visibility to ¾ SM, LNAV/VNAV all Cats visibility to 1 SM and LNAV Cats C/D visibility to 1 ¾ SM. When local altimeter setting not received, use PZQ altimeter setting and increase LPV DA to 1029 feet and all visibilities ¾ SM; increase LNAV/VNAV DA to 1084 feet; increase all MDAs 60 feet. For inop ALS when using PZQ altimeter setting, increase LPV all Cats visibility to 1 SM.

MALSR

MISSED APPROACH: Climb to 3500 direct HIMVO and on track 307° to RABBO and hold.

ATIS 120.675 327.05	ALPENA APP CON ★ 128.425 379.3	ALPENA TOWER ★ 121.35 (CTAF) 0 318.1	GND CON 121.9 275.8	UNICOM 122.95
-------------------------------	--	--	-------------------------------	-------------------------



4 NM Holding Pattern	JEGOB	ONSOE	3500	HIMVO	tr 307°	RABBO
6000	187°	007°	2800	1.3 NM to RW01	RW01	
GP 3.00°	TCH 52	2800	6 NM	5 NM	1.3	
CATEGORY	A	B	C	D		
LPV DA	974-½		289 (300-½)			
LNAV/VNAV DA	1029-⅝		344 (400-⅝)			
LNAV MDA	1160-½	475 (500-½)	1160-1	475 (500-1)		
CIRCLING	1160-1	470 (500-1)	1220-1½ 530 (600-1½)	1300-2 610 (700-2)		

EC-1, 07 AUG 2025 to 04 SEP 2025

EC-1, 07 AUG 2025 to 04 SEP 2025