

ALPENA, MICHIGAN

HI-TACAN RWY 19

VORTAC APN 116.5 Chgn 112	APCH CRS 175°	Rwy Idg 9001 TDZE 683 Arpt Elev 690
---	-------------------------	--

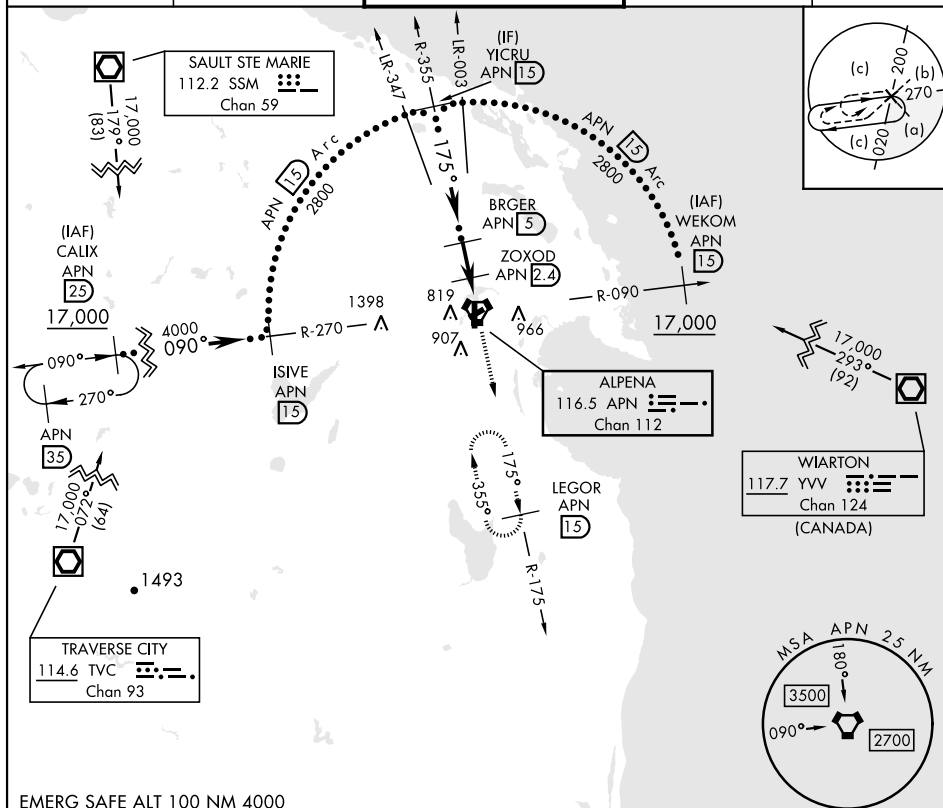
[USAF]

ALPENA COUNTY RGNL (KAPN)

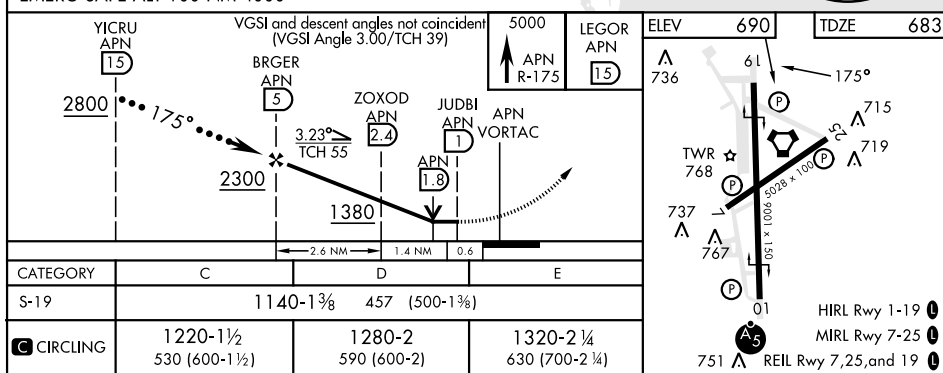
DME required

MISSED APPROACH: Climb to 5000 on APN R-175 to LEGOR (15 DME) and hold, continue climb in hold to 5000.

ATIS ★ 120.675 327.05	ALPENA APP CON 128.425 379.3	ALPENA TOWER ★ 121.35 (CTAF) 0 318.1	GND CON 121.9 275.8	UNICOM 122.95
--------------------------	---------------------------------	---	------------------------	------------------



EMERG SAFE ALT 100 NM 4000



ALPENA, MICHIGAN

45°05'N-83°34'W

ALPENA COUNTY RGNL (KAPN)

Amdt 5C 13AUG20

HI-TACAN RWY 19

EC-1, 07 AUG 2025 to 04 SEP 2025

EC-1, 07 AUG 2025 to 04 SEP 2025