
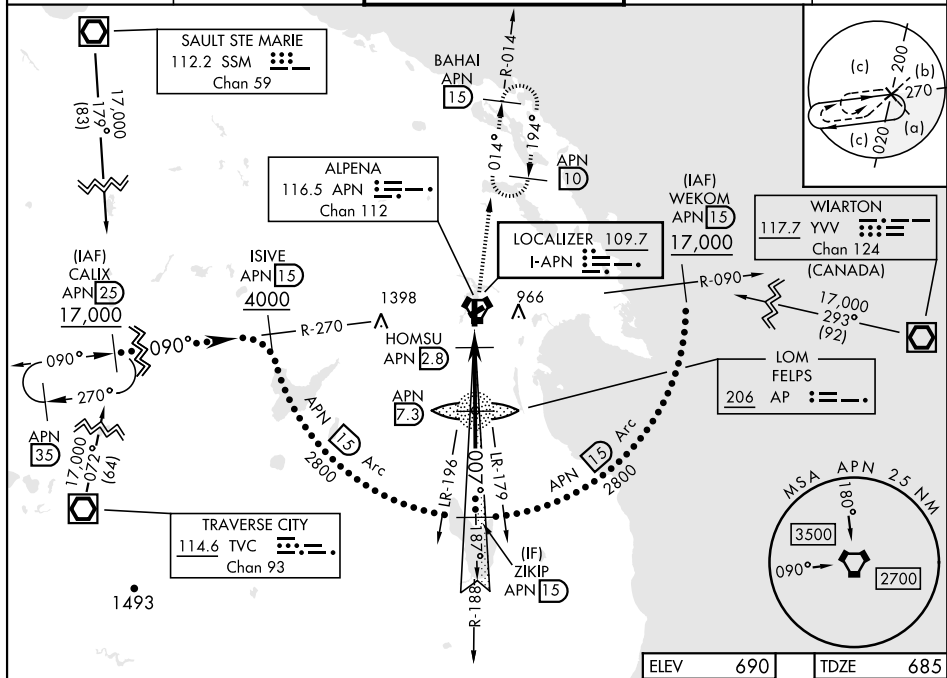


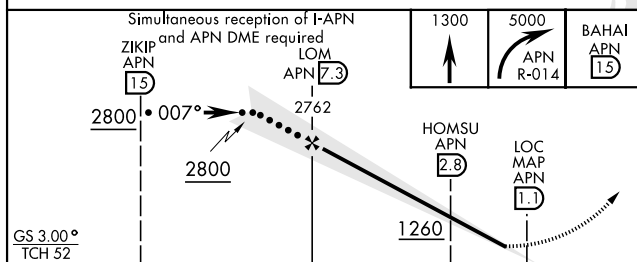
## HI-ILS or LOC RWY 1


LOC I-APN <b>109.7</b>	APCH CRS <b>007°</b>	Rwy Idg <b>9001</b> TDZE <b>685</b> Arpt Elev <b>690</b>	[USAF]	ALPENA COUNTY RGNL (KAPN)
DME required			MALSR	MISSED APPROACH: Climb to 1300, then climbing right turn to 5000 on APN VORTAC R-014 to BAHAI/15 DME and hold. Continue climb-in-hold to 5000.
<b>▽</b> * When ALS inop, increase vis to ¾ mile. ** When ALS inop, increase vis to 1¾ miles.				

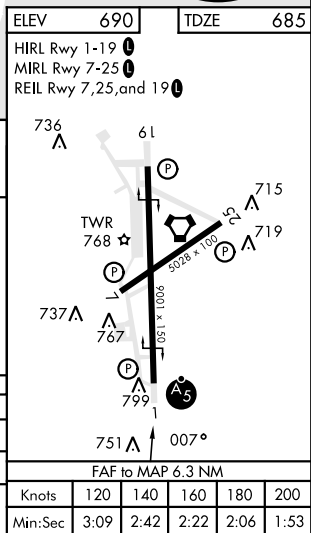
ATIS ★ 120.675 327.05	ALPEN A APP CON 128.425 379.3	ALPEN A TOWER ★ 121.35 (CTAF) 0 318.1	GND CON 121.9 275.8	UNICOM 122.95
--------------------------	----------------------------------	--	------------------------	------------------



EMERG SAFE ALT 100 NM 4000



CATEGORY		C	D	E
S-ILS 1 *		885-1/2	200 (200-1/2)	
S-LOC 1 **		1140-7/8	455 (500-7/8)	
 CIRCLING	1220-1/2 530 (600-1 1/2)	1280-2 590 (600-2)	1320-2 1/4 630 (700-2 1/4)	



## HI-ILS or LOC RWY 1