

| | | | |
|--|------------------------|-----------------------------|---|
| WAAS CH 57933 W17A | APP CRS 174° | Rwy Idg TDZE Apt Elev | 6502 867 874 |
|--|------------------------|-----------------------------|---|

RNAV (GPS) RWY 17

KALAMAZOO/BATTLE CREEK INTL (AZO)

RNP APCH - GPS

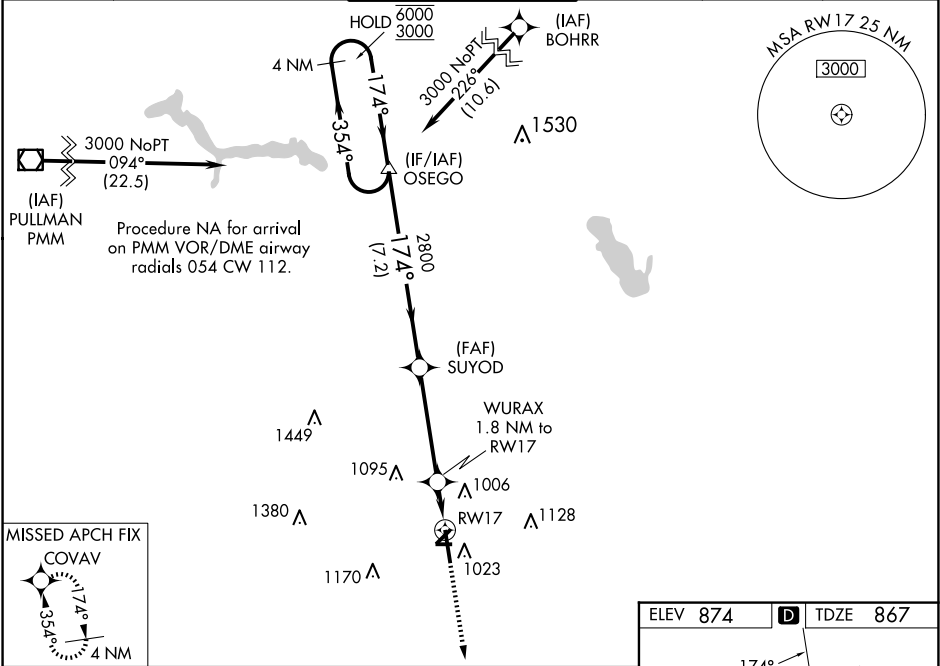
▼

▲

Rwy 17 helicopter visibility reduction below ¾ SM NA. Baro-VNAV NA when using Battle Creek altimeter setting. For uncompensated Baro-VNAV systems, LNAV/VNAV NA below -20°C or above 54°C. Circling Rwy 5, 9, 23, 27 NA at night. When local altimeter setting not received, use Battle Creek altimeter setting: increase LPV DA to 1200 feet, LNAV/VNAV DA to 1229 feet; increase all MDAs 60 feet.

MISSED APPROACH:
Climb to 2800 direct COVAV and hold.

| | | | | | |
|-----------------------|--|---|-------------------------|---------------------------|-------------------------|
| ATIS 127.25 | GREAT LAKES APP CON ★ 121.2 239.25 | KALAMAZOO TOWER ★ 118.3 (CTAF) 0 257.875 | GND CON 121.9 | CLNC DEL 121.75 | UNICOM 122.95 |
|-----------------------|--|---|-------------------------|---------------------------|-------------------------|



4 NM

Holding Pattern

OSEGO

SUYOD

WURAX
1.8 NM to
RW17

RW17

2800

COVAV

6000

3000

← 354°

174° →

174°

2800

1460

GP 3.00°

TCH 45

7.2 NM

4.2 NM

1.8

| CATEGORY | A | B | C | D |
|--------------|--------|-------------|-------------------------|-----------------------|
| LPV DA | 1156-1 | | 289 (300-1) | |
| LNAV/VNAV DA | 1185-1 | | 318 (400-1) | |
| LNAV MDA | 1320-1 | 453 (500-1) | 1320-1¾ | 453 (500-1¾) |
| CIRCLING | 1380-1 | 506 (600-1) | 1480-1¾ 606 (700-1¾) | 1480-2 606 (700-2) |

