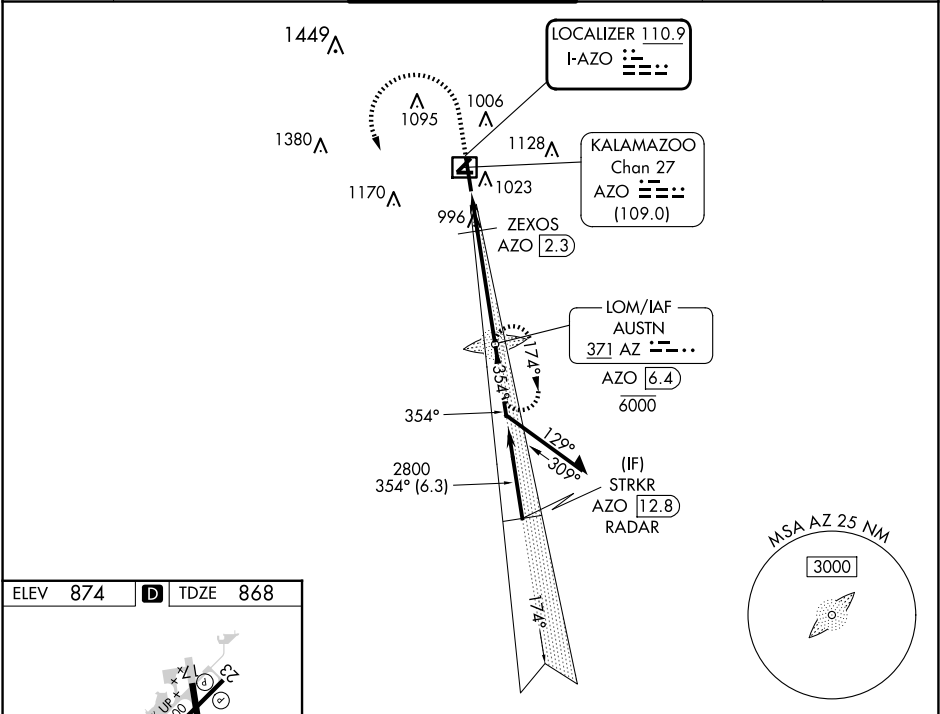


LOC I-AZO 110.9	APP CRS 354°	Rwy Idg TDZE Apt Elev	6502 868 874
---------------------------	------------------------	-----------------------------	-----------------------------------------

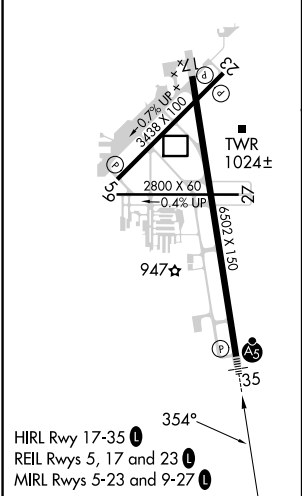
ILS or LOC RWY 35
KALAMAZOO/BATTLE CREEK INTL (AZO)

ADF required. DME required for LOC only. RADAR required for procedure entry.		MALSR	MISSED APPROACH: Climb to 2000 then climbing left turn to 2800 direct AUSTN LOM/AZO 6.4 DME and hold.
DME from AZO DME. DME use requires simultaneous reception of I-AZO and AZO DME. Circling Rwy 5, 9, 23, 27 NA at night. When local altimeter setting not received, use Battle Creek altimeter setting: increase S-ILS 35 DA to 1112 feet; increase all MDAs 60 feet and visibility S-LOC 35 Cat C/D to RVR 4500. * RVR 1800 authorized with use of FD or AP or HUD to DA (NA when using Battle Creek altimeter setting).			

ATIS 127.25	GREAT LAKES APP CON ★ 121.2 239.25	KALAMAZOO TOWER ★ 118.3 (CTAF) 0 257.875	GND CON 121.9	CLNC DEL 121.75	UNICOM 122.95
-----------------------	----------------------------------------------	----------------------------------------------------	-------------------------	---------------------------	-------------------------



ELEV 874	D	TDZE 868
----------	---	----------



2000	2800	AUSTN LOM AZO 6.4	AUSTN LOM AZO 6.4	6000	2710	174°	2800	354°	2800	GS 3.00° TCH 53
AUSTN LOM AZO 6.4		ZEXOS AZO 2.3	1400	2800	1.5 NM	4.1 NM	Remain within 10 NM			
CATEGORY	A	B	C	D						
S-ILS 35*	1068/24 200 (200-½)									
S-LOC 35	1260/24	392 (400-½)	1260/35	392 (400-¾)						
CIRCLING	1340-1	466 (500-1)	1480-1¾ 606 (700-1¾)	1480-2 606 (700-2)						