

VORTAC SPS 112.7 Chan 74	APP CRS 196°	Rwy Idg TDZE Apt Elev N/A N/A 1005
--	------------------------	--

VOR-B

WICHITA FALLS/ WICHITA VALLEY (F14)

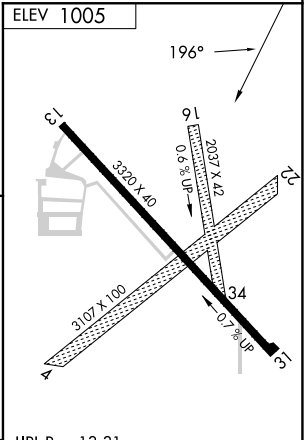
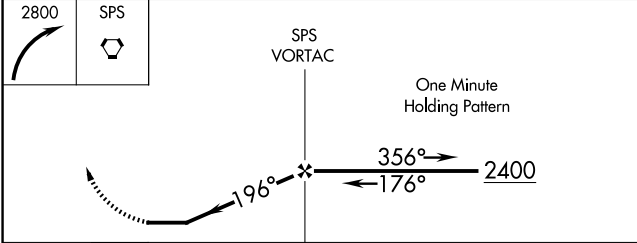
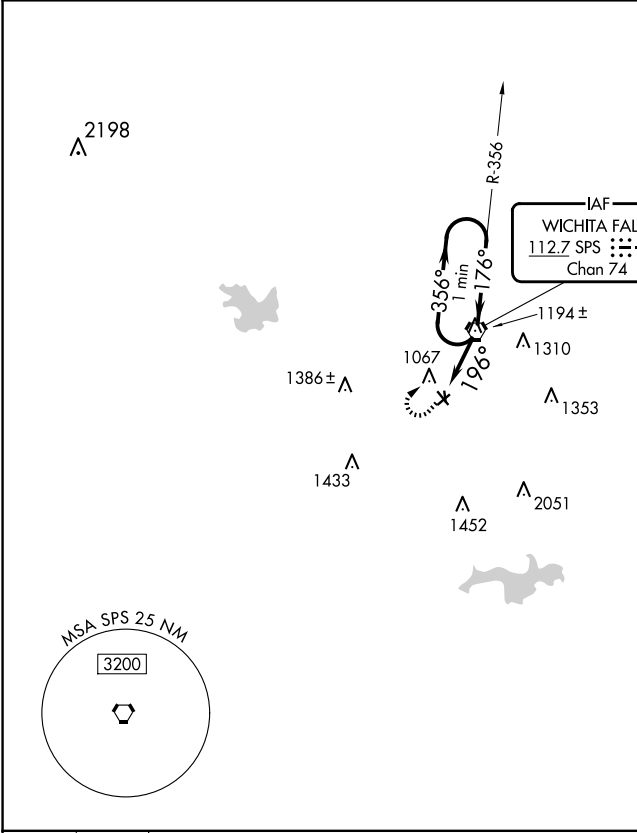
▼

▲ NA

Use Sheppard AFB/Wichita Falls Muni altimeter setting; when not received, use Frederick, OK altimeter setting and increase all MDA 100 feet. Increase Circling Cat C visibility ¼ mile. Circling NA to Rwys 4/22 and 16/34. Procedure NA at night.

MISSED APPROACH: Climbing right turn to 2800 direct SPS VORTAC and hold.

SHEPPARD APP CON ★ 118.2 292.3	UNICOM 122.8 (CTAF)
--	-------------------------------



<div><div></div><div>2.5 NM</div></div>					URL Kwy 13-31					
CATEGORY	A	B	C	D	FAF to MAP 2.5 NM					
CIRCLING	1520-1	1680-1	1700-2	NA	Knots	60	90	120	150	180
	515 (600-1)	675 (700-1)	695 (700-2)		Min:Sec	2:30	1:40	1:15	1:00	0:50

SC-2, 07 AUG 2025 to 04 SEP 2025

SC-2, 07 AUG 2025 to 04 SEP 2025