

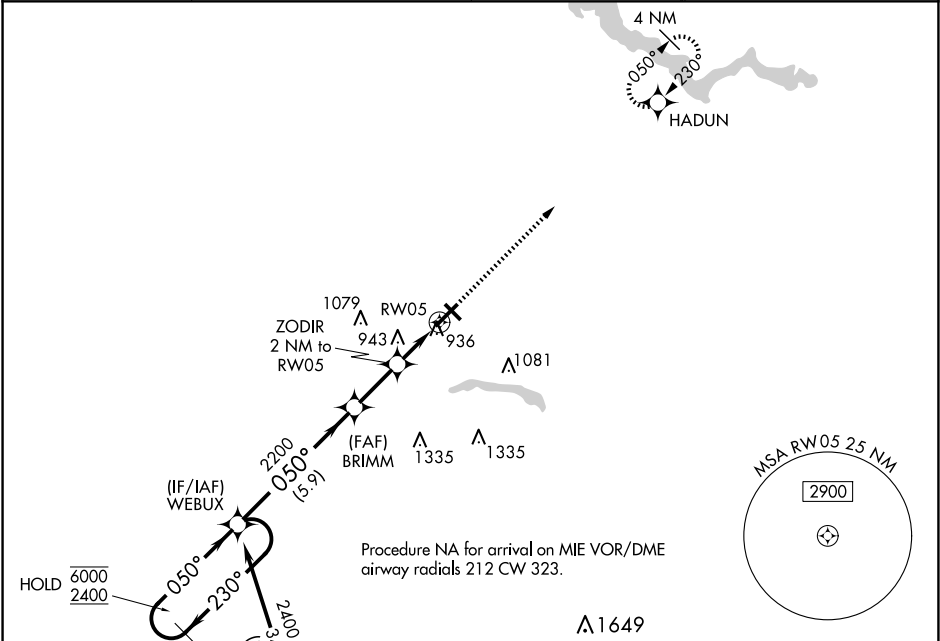
WAAS CH 78139 W05A	APP CRS 050°	Rwy Idg TDZE 832 Apt Elev 832	6001
--	------------------------	---	-------------

RNAV (GPS) RWY 5

KOKOMO MUNI (OKK)

RNP APCH - GPS.	MISSED APPROACH: Climb to 3000 direct HADUN and hold.
<div><div></div><div>For uncompensated Baro-VNAV systems, LNAV/VNAV NA below -16°C or above 54°C.</div></div>	

AWOS-3PT 128.675	GRISSEM APP CON★ 121.05 338.275	CLNC DEL 120.0	UNICOM 123.0 (CTAF) 0
----------------------------	---	--------------------------	---------------------------------



4 NM Holding Pattern

WEBUX

BRIMM

ZODIR 2 NM to RW05

HADUN

3000

1 NM to RW05

RW05

2700 279° (35.7)

MUNCIE MIE

(IAF) EDMEW

4 NM

6000 ← 230°

2400 050° →

GP 3.00° TCH 40

050°

2200

1500

5.9 NM

2.2 NM

1 NM

1 NM

VGSI and RNAV glidepath not coincident (VGSI Angle 3.00/TCH 35).

CATEGORY	A	B	C	D
LPV DA	1082- ³ / ₄ 250 (300- ³ / ₄)			
LNAV/VNAV DA	1102- ⁷ / ₈ 270 (300- ⁷ / ₈)			
LNAV MDA	1200-1 368 (400-1)			
CIRCLING	1260-1 428 (500-1)	1300-1 468 (500-1)	1400-1 ¹ / ₂ 568 (600-1 ¹ / ₂)	1420-2 588 (600-2)

ELEV 832

TDZE 832

874

4001 X 150

6001 X 150

050°

HIRL Rwy 5-23 0

MIRL Rwy 14-32 0

REIL Rws 5, 14 and 32 0