

WAAS CH 78134 W14A	APP CRS 140°	Rwy Idg TDZE Apt Elev	4001 826 832
--	------------------------	-----------------------------	---

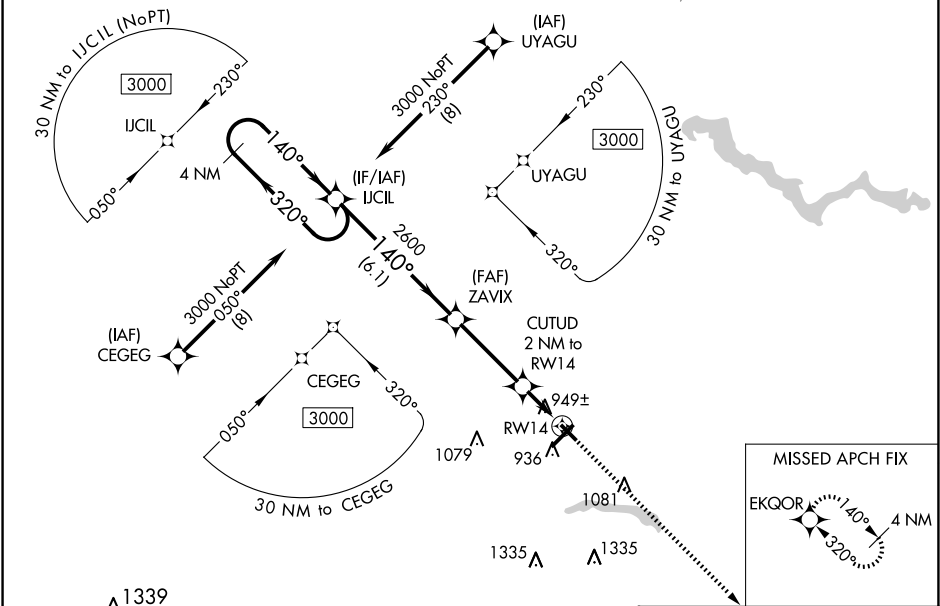
RNAV (GPS) RWY 14

KOKOMO MUNI (OKK)

For uncompensated Baro-VNAV systems, LNAV/VNAV NA below -1.6°C (4°F) or above 54°C (130°F). DME/DME RNP-0.3 NA.
Helicopter visibility reduction below ¾ SM NA.

MISSED APPROACH: Climb to 3000 direct EKGOR and hold.

AWOS-3PT 128.675	GRISSEM APP CON* 121.05 338.275	CLNC DEL 120.0	UNICOM 123.0 (CTAF) 0
----------------------------	---	--------------------------	---------------------------------



ELEV 832		TDZE 826	
4 NM Holding Pattern		VGSI and RNAV glidepath not coincident (VGSI Angle 3.17/TCH 33).	
3000		3000	
GP 3.00° TCH 52		*LNAV only	
320°		140°	
140°		320°	
2600		2600	
6.1 NM		3.4 NM	
1 NM		1 NM	
CATEGORY		A	
LPV DA		1076-1 250 (300-1)	
LNAV/VNAV DA		1199-1¼ 373 (400-1¼)	
LNAV MDA		1200-1 374 (400-1)	
CIRCLING		1260-1 428 (500-1)	
		1300-1 468 (500-1)	
		1400-1½ 568 (600-1½)	
		1640-2½ 808 (900-2½)	