

LOC I-OKK 108.9	APP CRS 230°	Rwy Idg TDZE Apt Elev	6001 827 832
---------------------------	------------------------	-----------------------------	---

ILS or LOC RWY 23

RADAR required for procedure entry.	
▼	
▲ NA	For inop ALS, increase S-LOC 23 Cat C/D visibility to 1 $\frac{1}{2}$ % SM. * DME from OKK

MALSR

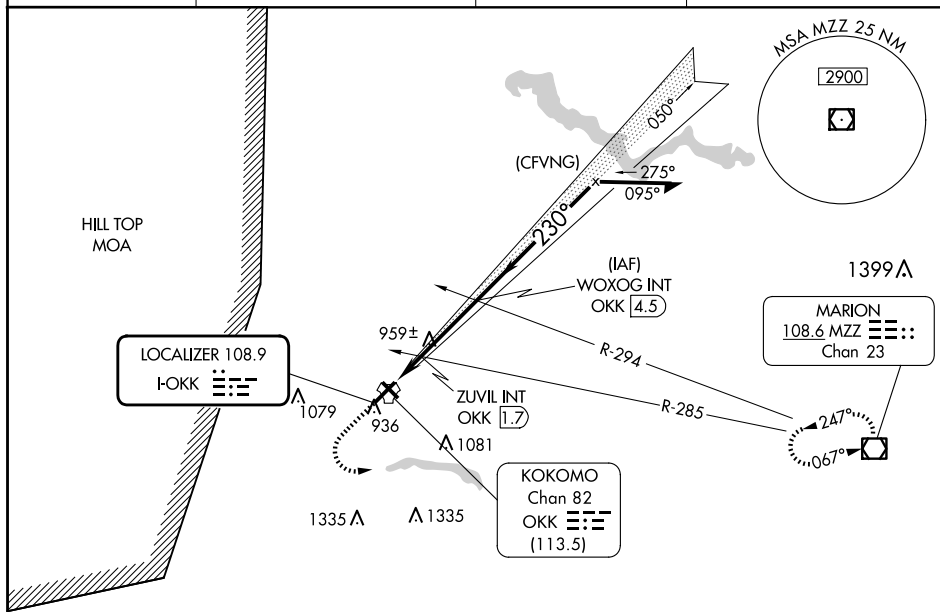
MISSED APPROACH: Climb to 1400 then climbing left turn to 2600 direct MZZ VOR/DME and hold.

AWOS-3PT
128.675

GRISSOM APP CON★
121.05 338.275

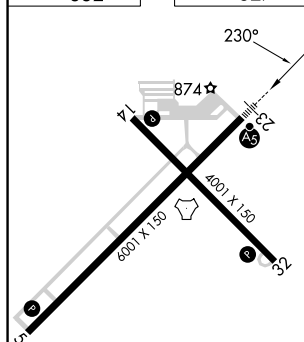
CLNC DEL
120.0

UNICOM
123.0 (CTAF) **L**



EC-2, 07 AUG 2025 to 04 SEP 2025

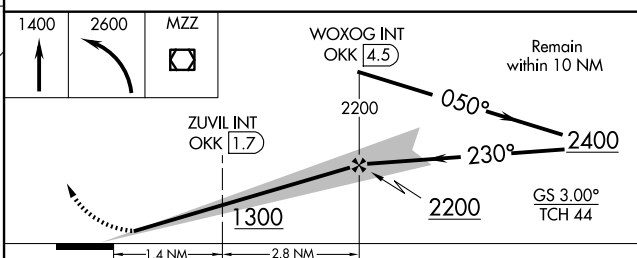
ELEV 832		TDZE 827
----------	--	----------



HIRL Rwy 5-23 **L**
MIRL Rwy 14-32 **L**
REIL Rwy 5, 14, and 32 **L**

FAF to MAP 4.2 NM

Knots	60	90	120	150	180
Min:Sec	4:12	2:48	2:06	1:41	1:24



CATEGORY	A	B	C	D
S-ILS 23	1027-½ 200 (200-½)			
S-LOC 23	1300-½ 473 (500-½)		1300-1 473 (500-1)	
C CIRCLING	1300-1 468 (500-1)		1400-1½ 568 (600-1½)	1420-2 588 (600-2)
ZUVIL FIX MINIMUMS* (DUAL VOR RECEIVERS or DME REQUIRED)				
S-LOC 23	1220-½ 393 (400-½)		1220-5⁄8 393 (400-5⁄8)	
C CIRCLING	1260-1 428 (500-1)	1300-1 468 (500-1)	1400-1½ 568 (600-1½)	1420-2 588 (600-2)

KOKOMO, INDIANA

Amdt 11 19MAY22

40°32'N-86°04'W

KOKOMO MUNI (OKK)

ILS or LOC RWY 23