

WAAS CH <b>93738</b> <b>W24A</b>	APP CRS <b>240°</b>	Rwy Idg TDZE <b>682</b> Apt Elev <b>682</b>
--	------------------------	---

RNAV (GPS) RWY 24

DECATUR (DEC)

RNP APCH.

▼

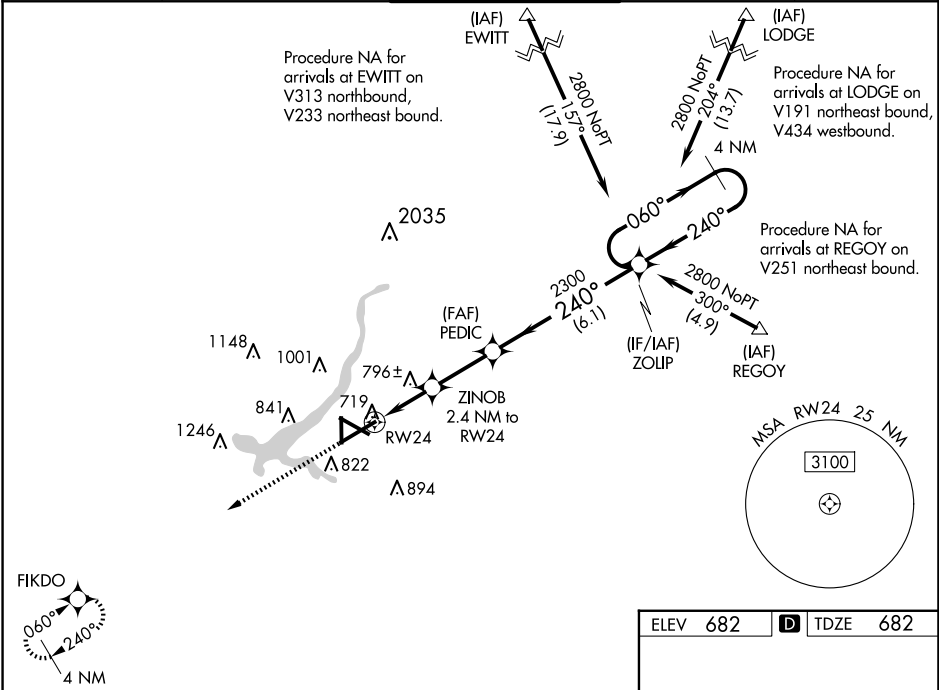
For uncompensated Baro-VNAV systems, LNAV/VNAV NA below -19°C or above 54°C.  
Baro-VNAV and VDP NA when using Logan County altimeter setting.

▲

When local altimeter setting not received, use Logan County altimeter setting; increase LPV DA to 1012 feet and visibility all Cats ¼ mile, LNAV/VNAV DA to 1168 feet and visibility all Cats ¼ mile; increase all MDA 80 feet and LNAV visibility Cats C/D ¾ mile, Circling visibility Cats C/D ¼ mile.

MISSED APPROACH:  
Climb to 2300 direct FIKDO and hold.

ATIS <b>126.35</b>	CHAMPAIGN APP CON* <b>132.85 290.225</b>	DECATUR TOWER* <b>118.9 (CTAF) 0 291.775</b>	GND CON <b>121.75 291.775</b>	UNICOM <b>122.95</b>
-----------------------	---	---	----------------------------------	-------------------------



2300

FIKDO

\*LNAV only.

RW24

1 NM

1.4 NM

2.5 NM

6.1 NM

ZINOB

2.4 NM to RW24

PEDIC

2300

ZOLIP

4 NM Holding Pattern

GP 3.00° TCH 52

CATEGORY	A	B	C	D
LPV DA		932-¾	250 (300-¾)	
LNAV/VNAV DA		1088-1⅓	406 (500-1⅓)	
LNAV MDA		1060-1	378 (400-1)	
CIRCLING	1140-1 458 (500-1)	1240-1 558 (600-1)	1360-2 678 (700-2)	1360-2¼ 678 (700-2¼)

ELEV 682 TDZE 682

81

6799 X 150

752

5298 X 150

36

8496 X 150

HIRL Rwy 6-24  
MIRL Rws 12-30 and 18-36