

VOR/DME OWB	APP CRS	Rwy Idg	8000
108.65	176°	TDZE	407
Chan 23 (Y)		Apt Elev	407

VOR RWY 18

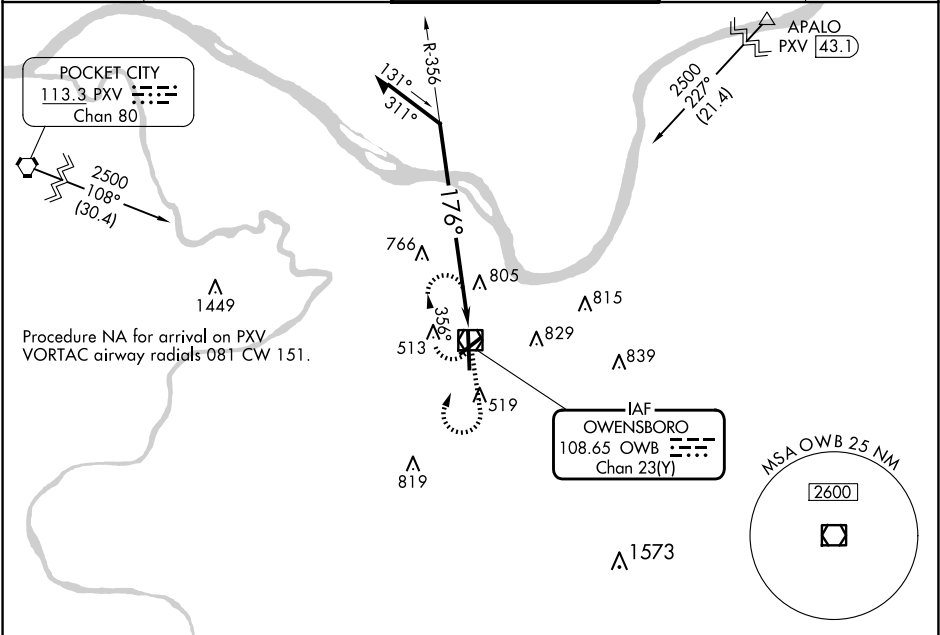
OWENSBORO/DAVIESS COUNTY RGNL (OWB)

T

A

MISSED APPROACH: Climb to 2500 then right turn direct OWB VOR/DME and hold.

AWOS-3PT	EVANSVILLE APP CON *	OWENSBORO TOWER *	GND CON	UNICOM
119.025	124.025 290.9	120.7 (CTAF) 251.15	121.7	122.95



ELEV 407	D	TDZE 407
----------	---	----------

Remain within 10 NM

OWB VOR/DME

2500

356°

176°

OWB 2.4

2.1 NM

2500

OWB

8L

8000 X 1.50

TWR 486

466

5000 X 100

36

A3

CATEGORY	A	B	C	D
S-18	1120-1	713 (800-1)	1120-2	713 (800-2)
CIRCLING	1120-1	713 (800-1)	1140-2 733 (800-2)	1140-2 1/4 733 (800-2 1/4)

MIRL Rwy 6-24  
HIRL Rwy 18-36  
REIL Rwy 6, 18, and 24