

WAAS CH 45508 W36A	APP CRS 002°	Rwy Idg TDZE Apt Elev	8000 401 407
--	------------------------	-----------------------------	---

RNAV (GPS) RWY 36

OWENSBORO/DAVIESS COUNTY RGNL (OWB)

⚠

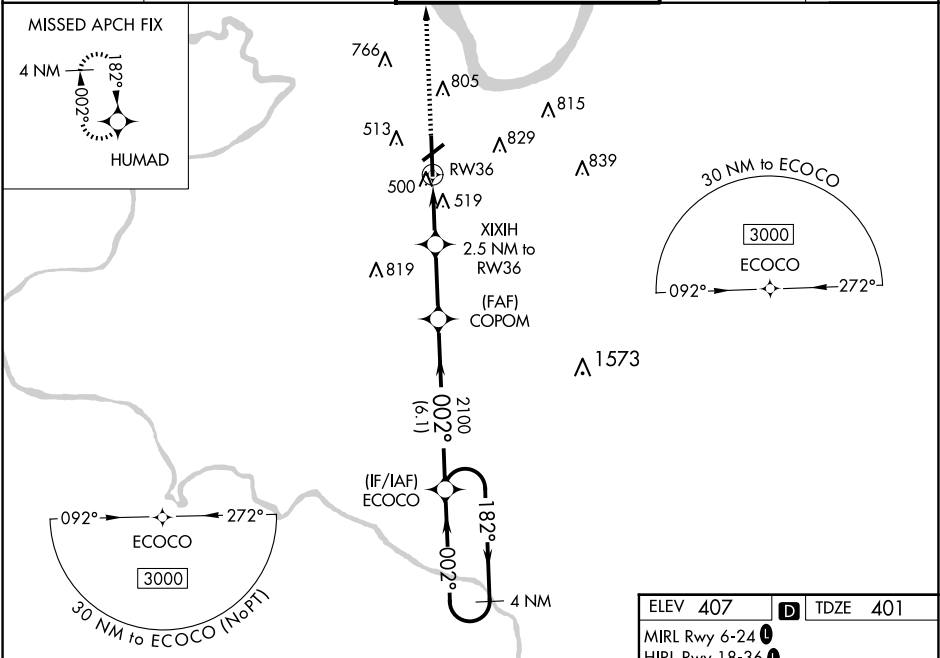
For uncompensated Baro-VNAV systems, LNAV/VNAV NA below -15°C (5°F) or above 54°C (130°F). DME/DME RNP-0.3 NA. Baro-VNAV and VDP NA when using Evansville altimeter setting. When local altimeter setting not received, use Evansville altimeter setting: increase LPV DA to 656 feet; increase LNAV/VNAV DA to 720 feet and all Cats visibility 1⁄8 mile; increase all MDA 60 feet and LNAV Cats C/D and Circling Cats C/D visibility 1⁄4 mile.

MALSR

MISSED APPROACH:

Climb to 3000 direct HUMAD and hold.

AWOS-3PT 119.025	EVANSVILLE APP CON ★ 124.025 290.9	OWENSBORO TOWER ★ 120.7 (CTAF) 0 251.15	GND CON 121.7	UNICOM 122.95
----------------------------	--	---	-------------------------	-------------------------



4 NM Holding Pattern

ECOCO

COPOM

XIXIH 2.5 NM to RW36

3000 HUMAD

GP 3.00° TCH 56

*1240

*1 NM to RW36

*LNAV only.

CATEGORY	A	B	C	D
LPV DA	601-1⁄2 200 (200-1⁄2)			
LNAV/VNAV DA	665-1⁄2 264 (300-1⁄2)			
LNAV MDA	780-1⁄2 379 (400-1⁄2)	780-5⁄8 379 (400-5⁄8)		
CIRCLING	860-1 453 (500-1)	1120-1 713 (800-1)	1140-2 733 (800-2)	1140-2 1⁄4 733 (800-2 1⁄4)

ELEV 407

D

TDZE 401

MIRL Rwy 6-24

HIRL Rwy 18-36

REIL Rws 6, 18, and 24