

WAAS
CH **49116**
W24A

APP CRS
236°

Rwy Idg **5000**
TDZE **403**
Apt Elev **407**

RNAV (GPS) RWY 24

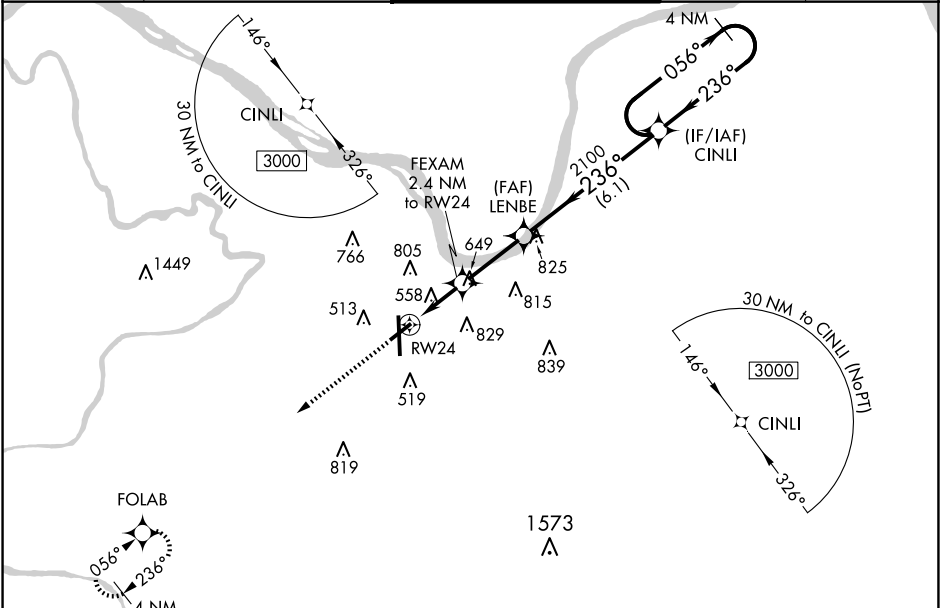
OWENSBORO/DAVIESS COUNTY RGNL (OWB)

⚠

For uncompensated Baro-VNAV systems, LNAV/VNAV NA below -15°C (5°F) or above 54°C (130°F). DME/DME RNP-0.3 NA. Rwy 24 helicopter visibility reduction below ¾ SM NA. When local altimeter setting not received, use Evansville altimeter setting: increase LPV DA to 712 feet and all Cats visibility ¼ mile; increase LNAV/VNAV DA to 902 feet and all Cats visibility ¼ mile; increase all MDA 60 feet and LNAV Cats C/D and Circling Cats C/D visibility ¼ mile. Baro-VNAV and VDP NA when using Evansville altimeter setting.

MISSED APPROACH:
Climb to 3000 direct FOLAB and hold.

AWOS-3PT 119.025	EVANSVILLE APP CON ★ 124.025 290.9	OWENSBORO TOWER ★ 120.7 (CTAF) 0 251.15	GND CON 121.7	UNICOM 122.95
----------------------------	--	---	-------------------------	-------------------------



ELEV **407**

D

TDZE **403**

3000

FOLAB

* LNAV only.

RW24

1.2 NM to RW24

1.2 NM to RW24

2.8 NM to LENBE

6.1 NM to CINLI

81

8000

051 X 150

5000 X 100

36

AS

TWR 486

466

CATEGORY	A	B	C	D
LPV DA		653-¾	250 (300-¾)	
LNAV/VNAV DA		843-1½	440 (500-1½)	
LNAV MDA	820-1	417 (500-1)	820-1½	417 (500-1½)
CIRCLING	860-1 453 (500-1)	1120-1 713 (800-1)	1140-2 733 (800-2)	1140-2¼ 733 (800-2¼)

OWENSBORO, KENTUCKY

Amdt 2B 25MAR21

OWENSBORO/DAVIESS COUNTY RGNL (OWB)

37°44'N-87°10'W

RNAV (GPS) RWY 24