

LOC I-OWB

111.5

APP CRS

002°

Rwy Idg

8000

TDZE

401

Alt Elev

407

OWENSBORO/DAVIESS COUNTY RGNL (OWB)

ILS or LOC RWY 36

DME required.

⚠

DME from OWB VOR/DME. Simultaneous reception of I-OWB and OWB DME required.

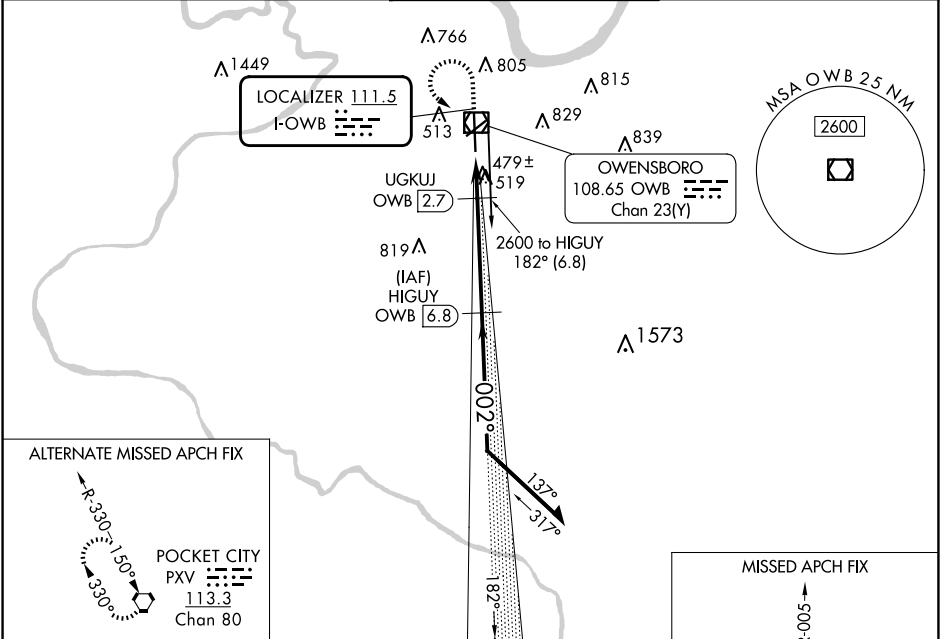
MALSR

⚠

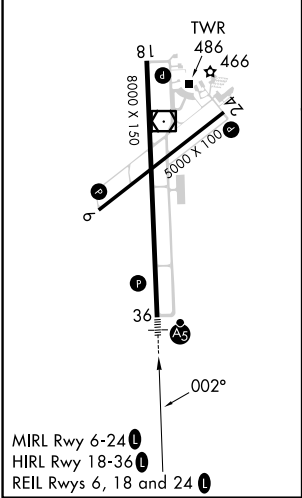
⚠

MISSED APPROACH: Climb to 2000 then climbing left turn to 2500 direct OWB VOR/DME and hold, continue climb-in-hold to 2500.

AWOS-3PT	EVANSVILLE APP CON ★	OWENSBORO TOWER ★	GND CON	UNICOM
119.025	124.025 290.9	120.7 (CTAF) 0 251.15	121.7	122.95



ELEV 407	D	TDZE 401
----------	---	----------



2000

↑

2500

↖

OWB

\*LOC only.

OWB VOR/DME

OWB 1

OWB 1.9

UGKJ OWB 2.7

2300

2300

182°

002°

2600

GS 3.00°

TCH 56

0.9 NM

0.8 NM

4.1 NM

\*980

Remain within 10 NM

CATEGORY	A	B	C	D
S-ILS 36		601-½	200 (200-½)	
S-LOC 36		740-½	339 (400-½)	
<div>CIRCLING</div>	860-1 453 (500-1)	1120-1 713 (800-1)	1140-2 733 (800-2)	1140-2¼ 733 (800-2¼)