

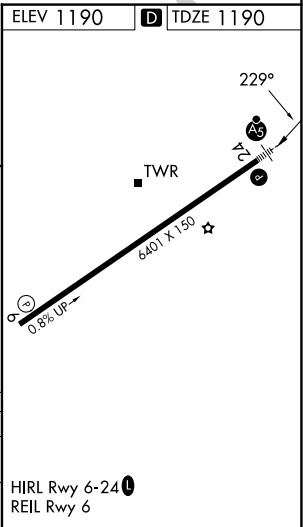
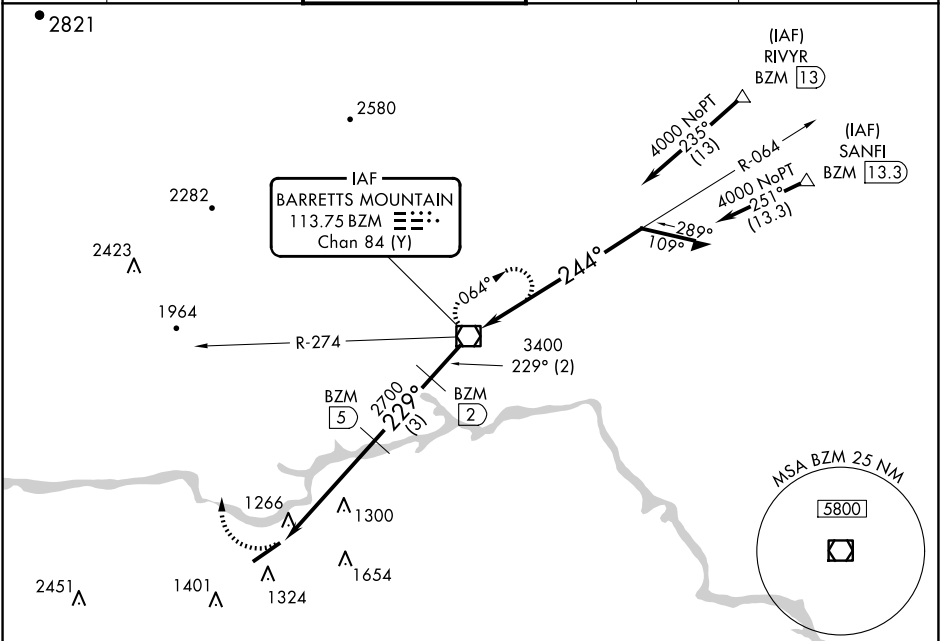
VOR/DME BZM	APP CRS	Rwy Ldg	6401
113.75	229°	TDZE	1190
Chan 84 (Y)		Apt Elev	1190

VOR/DME RWY 24

HICKORY RGNL (HKY)

<div><div>▼</div><div>▲</div></div> <div>Inop table does not apply. Night landing: Rwy 1/6/19 NA. When local altimeter setting not received, use Morganton altimeter setting and increase all MDA 40 feet and visibility S-24 and Circling Cat D ¼ SM.</div>	<div><div>MALSR</div><div></div></div> <div>MISSED APPROACH: Climbing right turn to 4000 via heading 340° and BZM R-274 to BZM VOR/DME and hold.</div>
--	--

ASOS 118.325	ATLANTA CENTER 125.15 263.0	HICKORY TOWER ★ 128.15 (CTAF) 0	GND CON 121.7	CLNC DEL 121.7	CLNC DEL 124.25 (When twr closed)
-----------------	--------------------------------	------------------------------------	------------------	-------------------	---



<div>4000</div> <div>hdg 340°</div>	<div>BZM R-274</div> <div>BZM</div>	<div>BZM</div> <div>2700</div>	<div>BZM</div> <div>3400</div>	<div>BZM VOR/DME</div> <div>064°</div>	<div>Remain within 10 NM</div>
<div>5 NM</div>	<div>3 NM</div>	<div>2 NM</div>			
CATEGORY	A	B	C	D	
S-24	1600-1	410 (500-1)	1600-1¼	410 (500-1¼)	
CIRCLING	1640-1 450 (500-1)	1660-1 470 (500-1)	2020-2½ 830 (900-2½)	2040-2¾ 850 (900-2¾)	

SE-2, 07 AUG 2025 to 04 SEP 2025

SE-2, 07 AUG 2025 to 04 SEP 2025