

HICKORY, NORTH CAROLINA

AL-706 (FAA)

25163

WAAS CH <b>82623</b> <b>W06A</b>	APP CRS <b>061°</b>	Rwy Ldg <b>6401</b> TDZE <b>1152</b> Apt Elev <b>1190</b>
--	------------------------	---

# RNAV (GPS) RWY 6

## HICKORY RGNL (HKY)

RNP APCH-GPS.



Rwy 6 helicopter visibility reduction below  $\frac{3}{4}$  SM NA.

**MISSED APPROACH:** Climb to 4100 direct PETIC and on track 043° to BZM VOR/DME and hold, continue climb-in-hold to 4100.

ASOS  
**118.325**

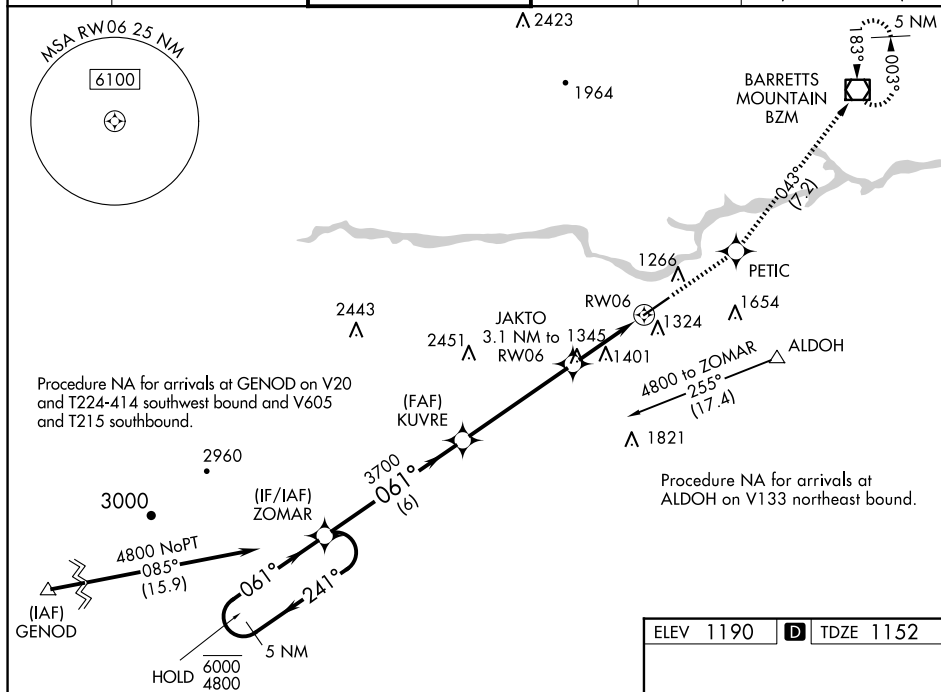
ATLANTA CENTER  
125.15 263.0

HICKORY TOWER ★  
128.15 (CTAF) L

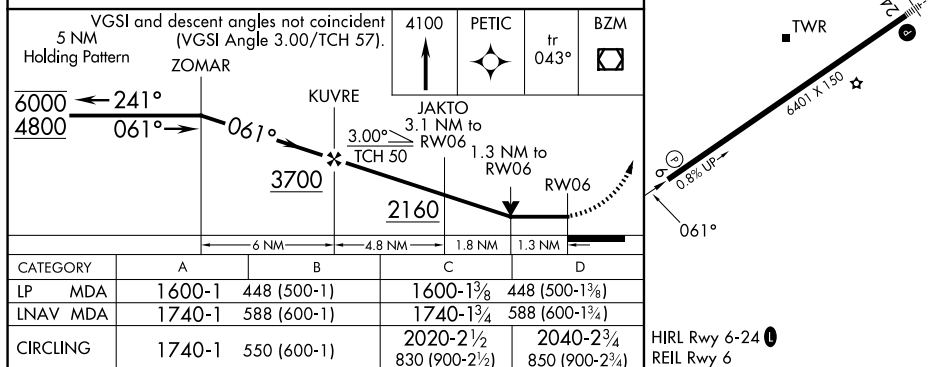
GND CON  
**121.7**

CLNC DEL  
**121.7**

CLNC DEL  
**124.25**  
(When twr closed)



ELEV 1190	<b>D</b>	TDZE 1152
-----------	----------	-----------



HICKORY, NORTH CAROLINA

Amdt 2 25JAN24

35°44'N-81°23'W

HICKORY RGNL (HKY)

RNAV (GPS) RWY 6

SE-2, 07 AUG 2025 to 04 SEP 2025