

HICKORY, NORTH CAROLINA

AL-706 (FAA)

25163

LOC HHKY <b>108.7</b>	APP CRS <b>241°</b>	Rwy Ldg <b>6401</b> TDZE <b>1190</b> Apt Elev <b>1190</b>
--------------------------	------------------------	---

ILS or LOC RWY 24  
HICKORY RGNL (HKY)

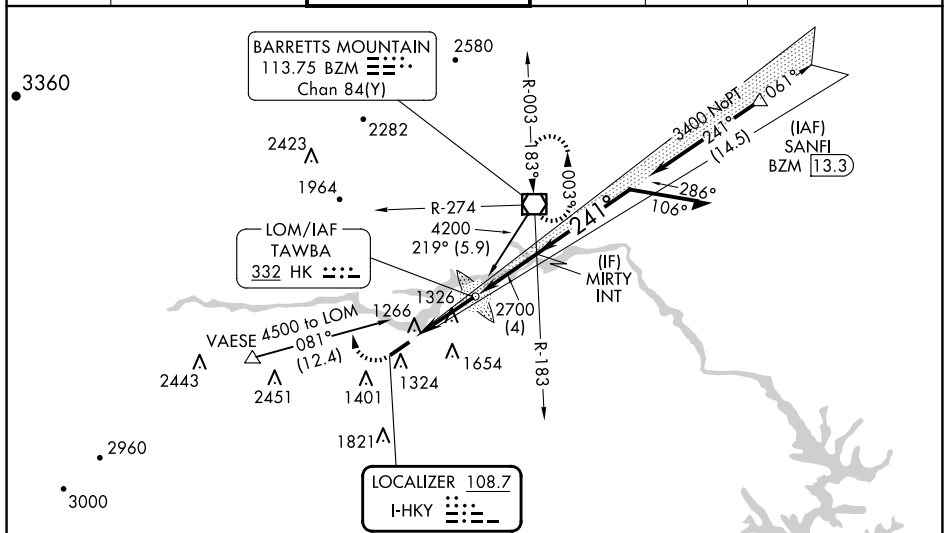
**⚠** For inop ALS, increase S-LOC 24 Cat C and D visibility  $\frac{1}{8}$  SM.

MALSR



**MISSED APPROACH:** Climb to 1700 then climbing right turn to 4000 on heading 340° and on BZM VOR/DME R-274 to BZM VOR/DME and hold.

ASOS <b>118.325</b>	ATLANTA CENTER <b>125.15 263.0</b>	HICKORY TOWER ★ <b>128.15 (CTAF) 0</b>	GND CON <b>121.7</b>	CLNC DEL <b>121.7</b>	CLNC DEL <b>124.25</b> (When twr closed)
------------------------	---------------------------------------	---	-------------------------	--------------------------	--



SE-2, 07 AUG 2025 to 04 SEP 2025

**HIRL Rwy 6-24**  
**REIL Rwy 6**

0.8% UP →

TWR

241°

6401 X 150

**ALTERNATE MISSED APCH FIX**

TAWBA  
HK 332

241°  
061°

MSL AGL NM

5800

1700 4000 BZM R-274 BZM

hdg 340°

HK LOM TAWBA

Remain within 10 NM

2640 MIRTY INT 2700 3400 3400

GS 3.00° TCH 53

4.4 NM 4 NM

CATEGORY	A	B	C	D
S-ILS 24	1390-½ 200 (200-½)			
S-LOC 24	1580-½ 390 (400-½)		1580-⅝ 390 (400-⅝)	
Knots	60	90	120	150
Min:Sec	4:24	2:56	2:12	1:46

FAF to MAP 4.4 NM

**C CIRCLING**

1640-1 450 (500-1)	1660-1 470 (500-1)	2020-2½ 830 (900-2½)	2040-2¾ 850 (900-2¾)
--------------------	--------------------	----------------------	----------------------

## HICKORY, NORTH CAROLINA

Amdt 9 25JAN24

35°44'N-81°23'W

HICKORY RGNL (HKY)

ILS or LOC RWY 24