

VOR/DME BWD  
**113.55**  
Chan **82** (Y)

APP CRS  
**351°**

Rwy Idg **5599**  
TDZE **1386**  
Apt Elev **1387**

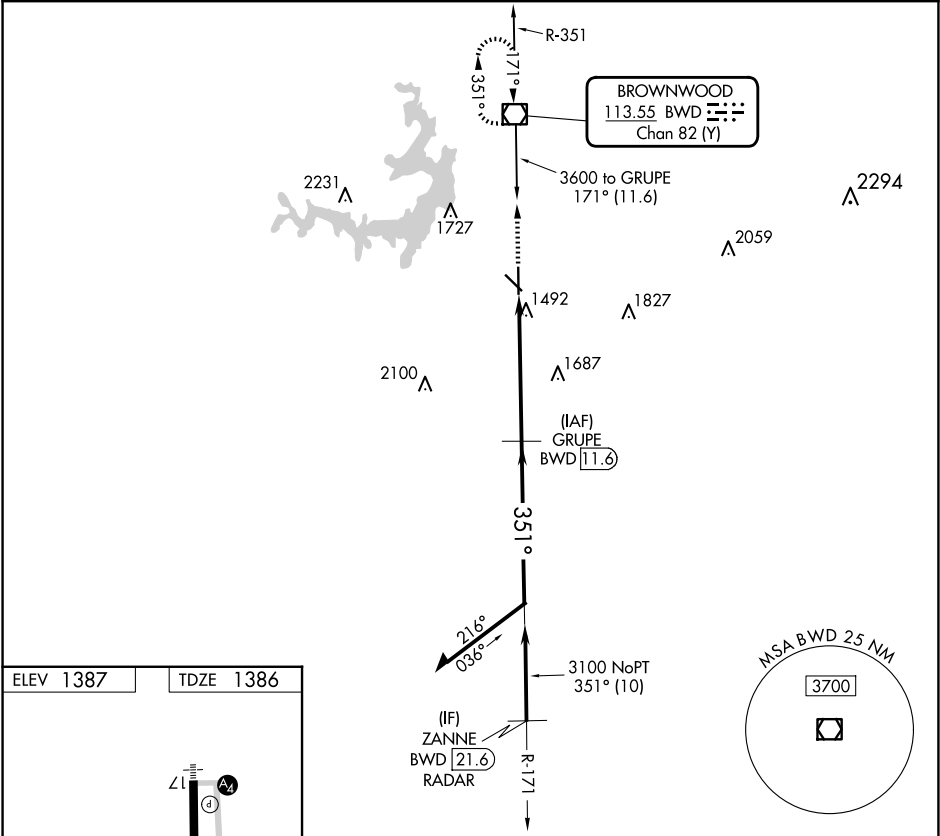
VOR RWY 35  
BROWNWOOD RGNL (BWD)

RADAR required for procedure entry. DME required.

MISSED APPROACH: Climb to 3600 direct BWD VOR/DME and hold, continue climb-in-hold to 3600.

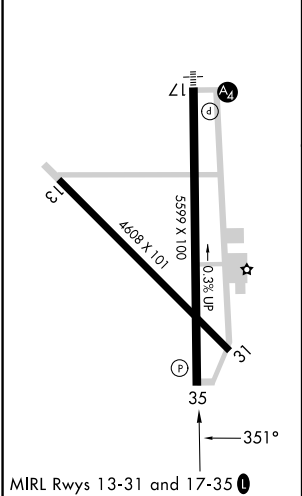
Rwy 35 helicopter visibility reduction below ¾ SM NA.

AWOS-3 <b>118.325</b>	FORT WORTH CENTER <b>127.45 290.3</b>	UNICOM <b>122.8</b> (CTAF) <b>0</b>
--------------------------	--	--



ELEV 1387

TDZE 1386



SC-3, 07 AUG 2025 to 04 SEP 2025

SC-3, 07 AUG 2025 to 04 SEP 2025