

WAAS CH <b>69612</b> <b>W14A</b>	APP CRS <b>146°</b>	Rwy Idg TDZE <b>77</b> Apt Elev <b>80</b>	<b>6157</b>
--	------------------------	---	-------------

RNAV (GPS) Y RWY 14

REPUBLIC (F'RG)

RNP APCH - GPS.

▼

For uncompensated Baro-VNAV systems, LNAV/VNAV NA below -15°C or above 54°C.

⚠

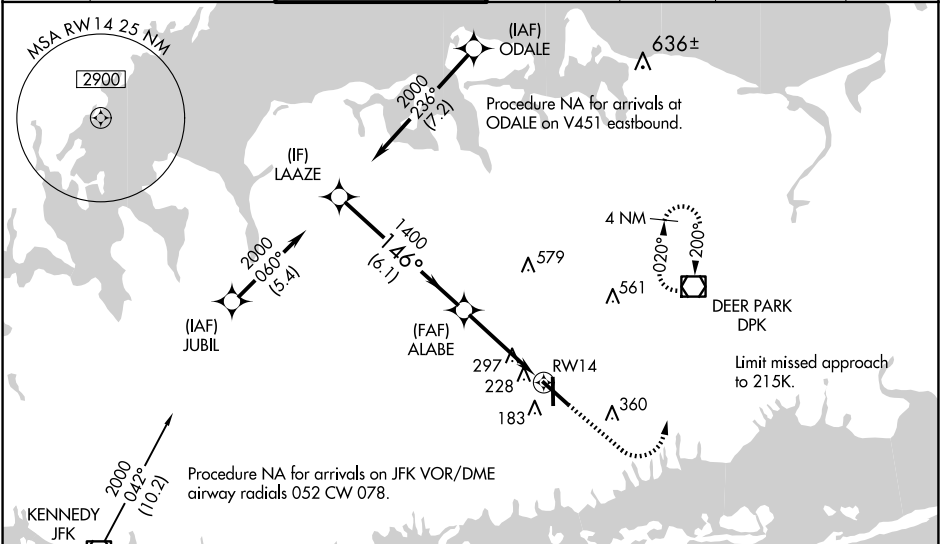
Baro-VNAV and VDP NA when using ISP altimeter setting. When local altimeter setting not received, use ISP altimeter setting and increase LPV DA to 374 feet and all visibilities ½ SM. Increase LNAV/VNAV DA to 442 feet; increase all MDAs 40 feet and LNAV visibility Cat C/D ½ SM, and Circling visibility Cat C ¼ SM.

MALSF

MALSF

MISSED APPROACH: Climb to 1800 then climbing left turn to 3000 direct DPK VOR/DME and hold, continue climb-in-hold to 3000.

ATIS <b>126.65</b>	NEW YORK APP CON <b>128.125 269.0</b>	REPUBLIC TOWER ★ <b>118.8</b> (CTAF) <b>279.65</b>	GND CON <b>121.6 269.6</b>	CLNC DEL <b>128.25</b>	CLNC DEL <b>128.25</b> (When twr closed)	UNICOM <b>122.95</b>
-----------------------	--	---	-------------------------------	---------------------------	--	-------------------------



ELEV 80

TDZE 77

GP 3.00°

TCH 60

1800

3000

DPK

LAAZE

2000

146°

1400

ALABE

1400

1.4 NM to RWY 14

RWY 14

6.1 NM

2.6 NM

1.4 NM

CATEGORY	A	B	C	D
LPV DA		337-3/4	260 (300-3/4)	
LNAV/VNAV DA		405-1	328 (400-1)	
LNAV MDA	560-3/4	483 (500-3/4)	560-1	483 (500-1)
CIRCLING	640-1 560 (600-1)	720-1 640 (700-1)	860-2 1/4 780 (800-2 1/4)	1000-3 920 (1000-3)

REIL Rwy 1, 19, and 32

MIRL Rwy 1-19

MIRL Rwy 14-32