

WAAS

CH **82524**

**W01A**

APP CRS

**013°**

Rwy Idg

**5517**

TDZE

**72**

Apt Elev

**80**

**RNAV (GPS) RWY 1**

REPUBLIC (F'RG)

RNP APCH - GPS.

⚠

For uncompensated Baro-VNAV systems, LNAV/VNAV NA below -12°C or above 54°C.  
Rwy 1 helicopter visibility reduction below ¾ SM NA.

MISSED APPROACH:

(Do not exceed 190K until DPK VOR/DME)  
Climb to 800 then climbing right turn to 3000 direct DPK VOR/DME and hold, continue climb-in-hold to 3000.

ATIS

**126.65**

NEW YORK APP CON

**128.125 269.0**

REPUBLIC TOWER ★

**118.8 (CTAF) 0 279.65**

GND CON

**121.6 269.6**

CLNC DEL

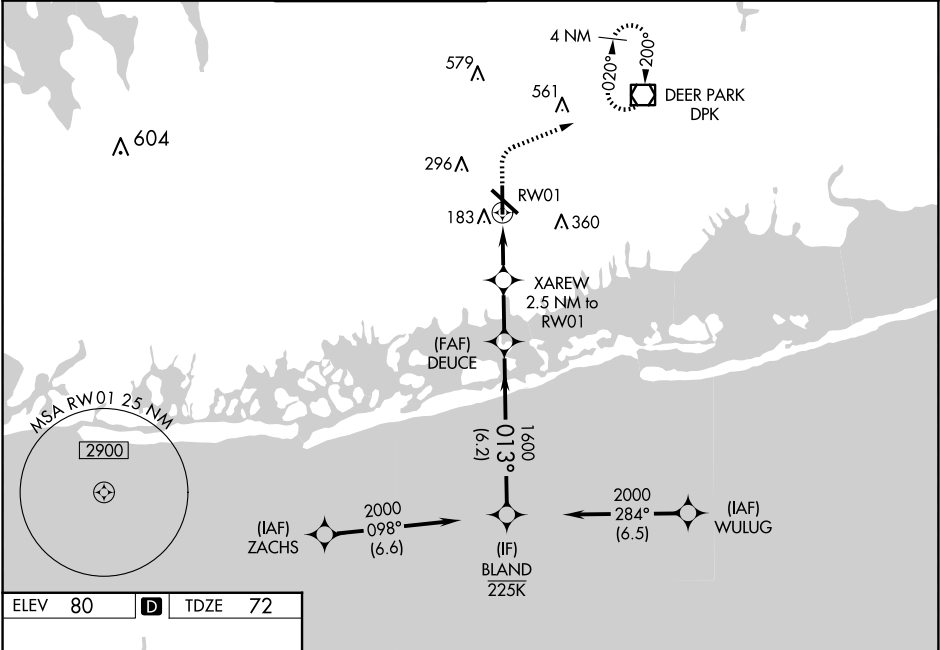
**128.25**

CLNC DEL

**128.25**  
(When twr closed)

UNICOM

**122.95**



ELEV 80

**D**

TDZE 72

800

3000

DPK

VGSI and RNAV glidepath not coincident  
(VGSI Angle 3.09°/TCH 44).

REIL Rwy 1, 19, and 32

MIRL Rwy 1-19

HIRL Rwy 14-32

013°

800

3000

DPK

DEUCE

XAREW

RWY01

1.1

1.4

2.2

6.2

CATEGORY	A	B	C	D
LPV DA	335- <sup>7</sup> / <sub>8</sub> 263 (300- <sup>7</sup> / <sub>8</sub> )			
LNAV/VNAV DA	370- <sup>7</sup> / <sub>8</sub> 298 (300- <sup>7</sup> / <sub>8</sub> )			
LNAV MDA	460-1 388 (400-1)		460-1 <sup>1</sup> / <sub>8</sub> 388 (400-1 <sup>1</sup> / <sub>8</sub> )	
<div><div>⬢</div>CIRCLING</div>	640-1 560 (600-1)	720-1 640 (700-1)	860-2 <sup>1</sup> / <sub>4</sub> 780 (800-2 <sup>1</sup> / <sub>4</sub> )	1000-3 920 (1000-3)