

VORTAC RQZ <b>112.2</b> Chan <b>59</b>	APCH CRS <b>015°</b>	Rwy Idg <b>7300</b> TDZE <b>661</b> Arpt Elev <b>685</b>
--	-------------------------	--

[USA]

REDSTONE AAF (KHUA)

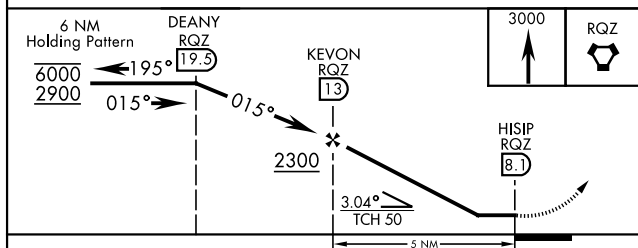
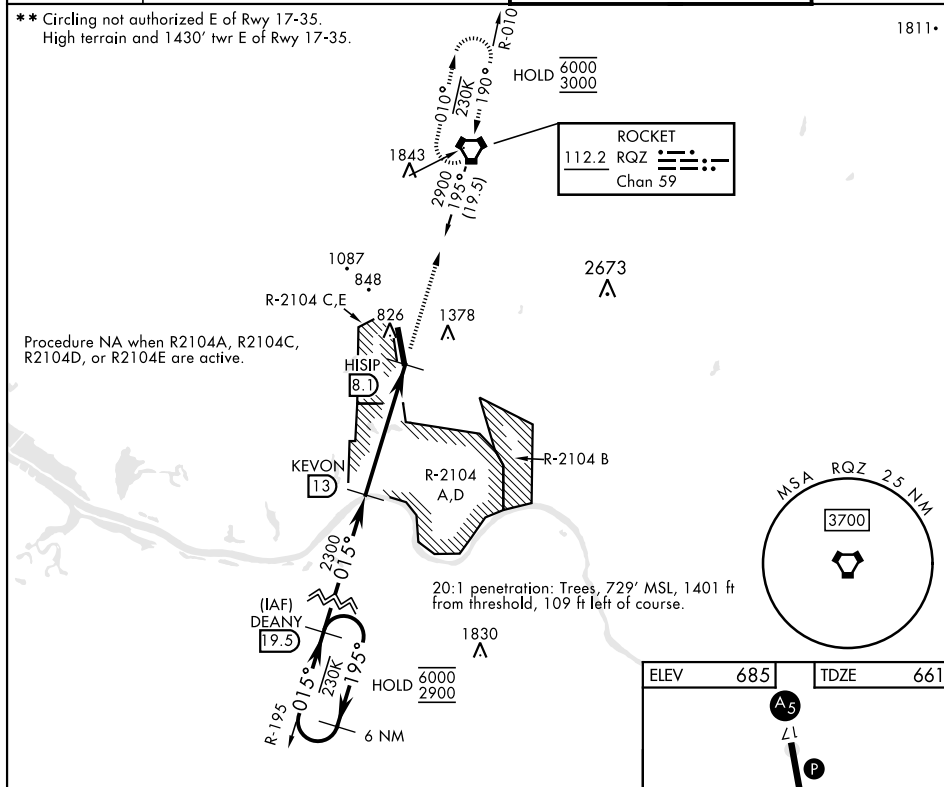
DME required

**T** \* At night, operational VGSI required,  
**A** remain on or above VGSI glidepath until threshold.  
Helicopter visibility reduction NA.

**MISSED APPROACH:** Climb to 3000 direct RQZ VORTAC and hold. Do not exceed 230 KIAS.

ATIS 120.65	HUNTSVILLE APP CON ★ 125.6 354.1	TOWER ★ 126.95 (CTAF) 0 290.275	PAR
----------------	-------------------------------------	------------------------------------	-----

**\*\* Circling not authorized E of Rwy 17-35.  
High terrain and 1430' twr E of Rwy 17-35.**



CATEGORY	A	B	C	D	E
S-35 *	1500-1 839 (900-1)	1500-1¼ 839 (900-1¼)	1500-2½	839	(900-2½)
<b>C</b> CIRCLING **	1500-1¼	815 (900-1¼)	1500-2½ 815 (900-2½)	1740-3	1055 (1100-3)

HIRL Rwy 17-35 **L**

REDSTONE ARSENAL, ALABAMA

34° 41' N-86° 41' W

REDSTONE AAF (KHUA)

Amdt 10 07SEP23

VOR RWY 35

SE-4. 07 AUG 2025 to 04 SEP 2025

SE-4, 07 AUG 2025 to 04 SEP 2025