

REDSTONE ARSENAL, ALABAMA

WAAS CH 50238 W35A	APCH CRS 353°	Rwy ldg TDZE Arprt Elev	7300 661 685
--------------------------	------------------	-------------------------------	--------------------

-(USA)

REDSTONE AAF (KHUA)

RNAV (GPS) RWY 35

RNP APCH - GPS

MISSED APPROACH: Climb to 3000 direct IPUDE and hold.

* Circling not authorized E of Rwy 17-35.

ATIS 120.65	HUNTSVILLE APP CON/DEP CON* 125.6 354.1	TOWER* 126.95 (CTAF) 0 290.275	PAR
----------------	--	-----------------------------------	-----

Visibility reduction by helicopters not authorized.

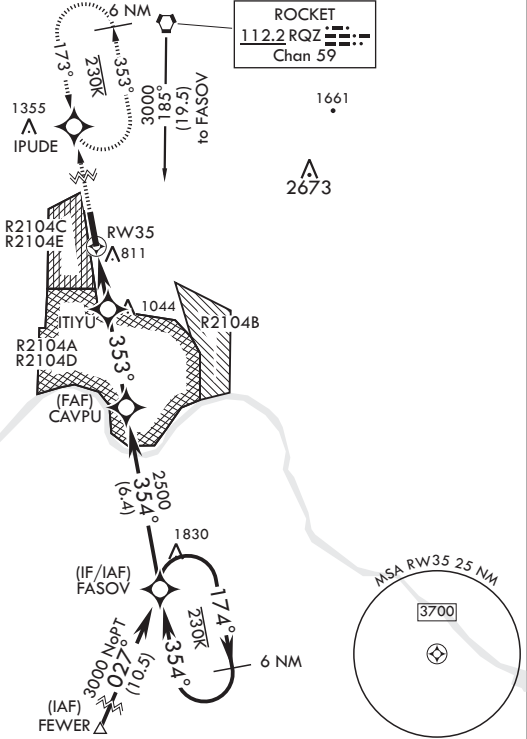
Inoperative table does not apply to LPV all CAT and LNAV CAT AB.

For uncompensated Baro-VNAV systems, LNAV/VNAV NA below -9°C (16°F) or above 54°C (130°F).

Procedure not authorized for arrivals at RQZ VORTAC airway R-147 CW R-261.

Procedure not authorized when R2104A or R2104C or R2104D are active.

Procedure not authorized for arrivals at FEWER southeast bound on T429.



3000

IPUDE

↑

FASOV

174°

3000

6 NM

Holding Pattern

CAVPU

354°

2500

ITIYU

353°

1400

RW35

2.2 NM

3.4 NM

GP 3.00°

TCH 50

CATEGORY	A	B	C	D	E
LPV DA	954-1		293	(300-1)	
LNAV/VNAV DA	1140-1 ⁵ / ₈		479	(500-1 ⁵ / ₈)	
LNAV MDA	1320-1 659 (700-1)		1320-1 ⁷ / ₈ 659 (700-1 ⁷ / ₈)		
C CIRCLING*	1320-1 635 (700-1)		1480-2 ¹ / ₄ 795 (800-2 ¹ / ₄) 1740-3 1055 (1100-3)		

HIRL all runways

ELEV 685

TDZE 661

A5

Z1

P

7300 x 150

0.4% UP

BCN

TWR 694

P

35

353°

REDSTONE ARSENAL, ALABAMA

34°41'N - 86°41'W

REDSTONE AAF (KHUA)

Amndt 2 05OCT23

RNAV (GPS) RWY 35

SE-4, 07 AUG 2025 to 04 SEP 2025

SE-4, 07 AUG 2025 to 04 SEP 2025