

|                |             |                     |
|----------------|-------------|---------------------|
| VORTAC FBC     | APP CRS     | Rwy Ldg             |
| <b>108.2</b>   | <b>048°</b> | <b>4558</b>         |
| Chan <b>19</b> |             | TDZE <b>810</b>     |
|                |             | Apt Elev <b>813</b> |

VOR RWY 7

FINDLAY (FDY)

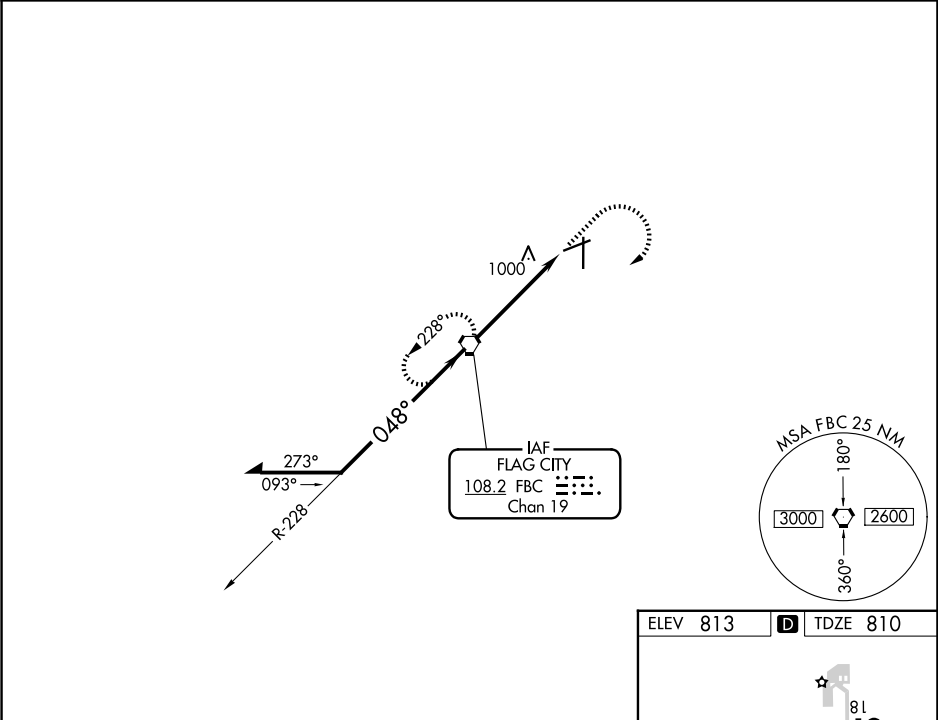
▼

⚠

Rwy 7 helicopter visibility reduction below 1 SM NA. When local altimeter setting not received, use Lima Allen County altimeter setting and increase all MDA 80 feet, and increase S-07 visibility Cat C/D ¼ SM, and Circling visibility Cat C/D ¼ SM. Straight-In Rwy 7 NA at night, Circling Rwy 7 NA at night.

MISSED APPROACH: Climb to 2500 then right turn direct FBC VORTAC and hold.

|                       |                                       |                                   |
|-----------------------|---------------------------------------|-----------------------------------|
| ASOS<br><b>132.85</b> | TOLEDO APP CON<br><b>120.8 317.55</b> | UNICOM<br><b>122.725 (CTAF) 0</b> |
|-----------------------|---------------------------------------|-----------------------------------|



VGSI and descent angles not coincident (VGSI Angle 3.00/TCH 23).  
Remain within 10 NM

2500

228°

048°

2400\*

3.05°

TCH 39

4.8 NM

2500

FBC

048°

5883 X 100

6499 X 100

36

81

25

|          |                    |                      |                      |   |
|----------|--------------------|----------------------|----------------------|---|
| CATEGORY | A                  | B                    | C                    | D |
| S-7      | 1260-1 450 (500-1) | 1260-1¼ 450 (500-1¼) | 1260-1½ 450 (500-1½) |   |
| CIRCLING | 1440-1 627 (700-1) | 1440-1¾ 627 (700-1¾) | 1540-2¼ 727 (800-2¼) |   |

ELEV 813

TDZE 810

HIRL Rwy 7-25 and 18-36 0

REIL Rwy 7, 25 and 36 0

FAF to MAP 4.8 NM

|         |      |      |      |      |      |
|---------|------|------|------|------|------|
| Knots   | 60   | 90   | 120  | 150  | 180  |
| Min:Sec | 4:48 | 3:12 | 2:24 | 1:55 | 1:36 |

EC-2, 07 AUG 2025 to 04 SEP 2025

EC-2, 07 AUG 2025 to 04 SEP 2025