

| | | |
|---------|----------|------|
| APP CRS | Rwy Ldg | 4558 |
| 074° | TDZE | 810 |
| | Apt Elev | 813 |

RNAV (GPS) RWY 7

FINDLAY (F'DY)

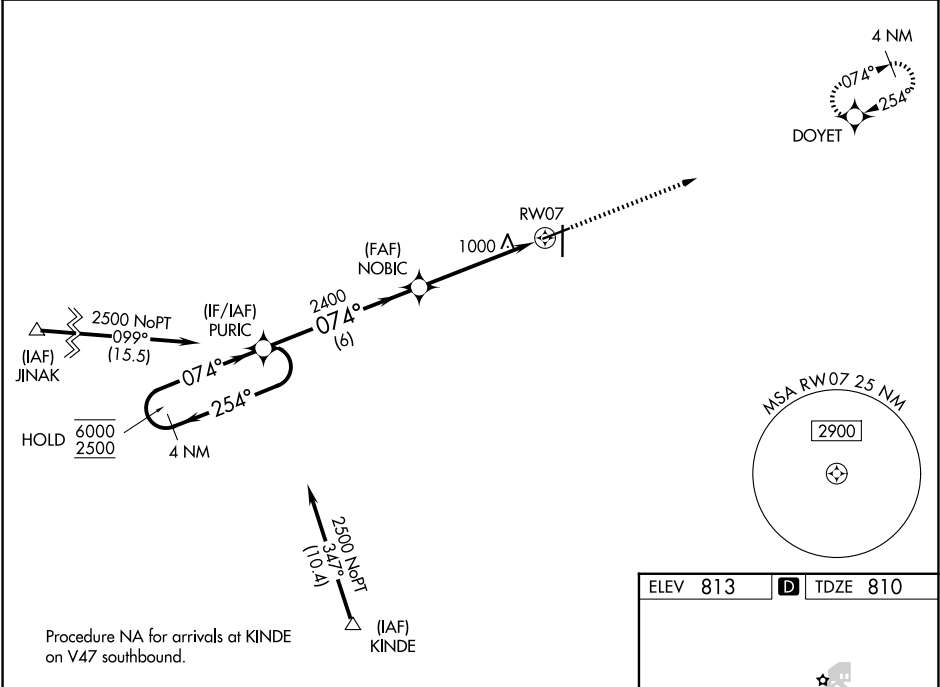
RNP APCH - GPS.

⚠

Baro-VNAV and VDP NA when using Lima Allen County altimeter setting. Rwy 7 helicopter visibility reduction below ¾ SM NA. For uncompensated Baro-VNAV systems, LNAV/VNAV NA below -16°C or above 54°C. When local altimeter setting not received, use Lima altimeter setting and increase LNAV/VNAV DA to 1391 feet and all visibilities ¾ SM. Increase all MDAs 80 feet and LNAV visibility Cat C/D ½ SM, and Circling visibility Cat C/D ¼ SM. Straight-In Rwy 7 NA at night, Circling Rwy 7 NA at night.

MISSED APPROACH:
Climb to 2500 direct
DOYET and hold.

| | | |
|----------------|--------------------------------|----------------------------|
| ASOS 132.85 | TOLEDO APP CON 120.8 317.55 | UNICOM 122.725 (CTAF) 0 |
|----------------|--------------------------------|----------------------------|



| | | | | | |
|-------------------------|--------|---|--------|--|-------------------|
| 4 NM Holding Pattern | | VGSI and RNAV glidepath not coincident (VGSI Angle 3.00/TCH 23). | | 2500 | DOYET |
| | | PURIC | NOBIC | 2400 | 1.4 NM to RW07 |
| GP 3.00° TCH 39 | | 6000 ← 254° 2500 → 074° | 074° | 2400 | |
| | | 6 NM | 3.5 NM | 1.4 | |
| CATEGORY | A | B | C | D | |
| LNAV/ VNAV | DA | 1311-1¾ | | 501 (500-1¾) | |
| LNAV MDA | 1260-1 | 450 (500-1) | | 1260-1¾ 450 (500-1¾) | |
| CIRCLING | 1440-1 | 627 (700-1) | | 1440-1¾ 627 (700-1¾) 1540-2¼ 727 (800-2¼) | |