

WAAS CH 72705 W36A	APP CRS 005°	Rwy Ldg TDZE Apt Elev 6499 809 813
--	------------------------	--

RNAV (GPS) RWY 36

FINDLAY (F'DY)

RNP APCH-GPS.

▼

For uncompensated Baro-VNAV systems, LNAV/VNAV NA below -16°C or above 47°C.

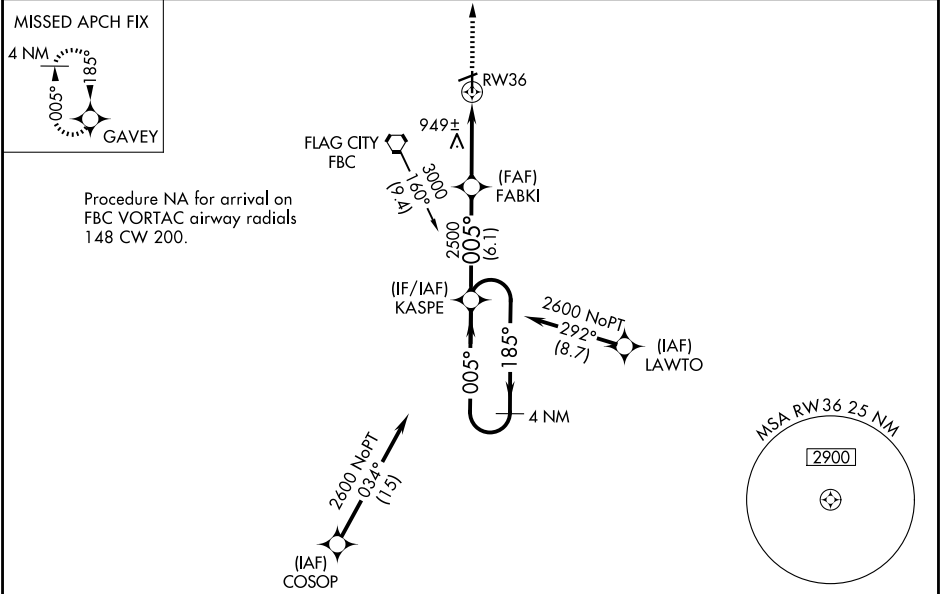
▲

Baro-VNAV and VDP NA when using Lima Allen County altimeter setting.

When local altimeter setting not received, use Lima Allen County altimeter setting: increase all DAs/MDAs 80 feet; increase LNAV Cat C/D visibility $\frac{1}{8}$ SM and Circling Cat C/D visibility $\frac{1}{4}$ SM. Circling Rwy 7 NA at night.

MISSED APPROACH:
Climb to 2500 direct GAVEY and hold.

ASOS 132.85	TOLEDO APP CON 120.8 317.55	UNICOM 122.725 (CTAF)
-----------------------	---------------------------------------	---------------------------------



ELEV 813 TDZE 809

4 NM Holding Pattern

2600

185°

005°

KASPE

2500

005°

FABKI

2500

1.2 NM to RW36

RW36

GP 3.00° TCH 47

6.1 NM

3.9 NM

1.2

*LNAV only

CATEGORY	A	B	C	D
LPV DA	1106-1 297 (300-1)			
LNAV/VNAV DA	1229-1½ 420 (500-1½)			
LNAV MDA	1220-1 411 (500-1)	1220-1¼ 411 (500-1¼)		
CIRCLING	1440-1 627 (700-1)	1440-1¾ 627 (700-1¾)	1540-2¼ 727 (800-2¼)	

81

75

5883 X 100

6499 X 100

36

005°

HIRL Rwy 7-25 and 18-36

REIL Rwy 7, 25 and 36