

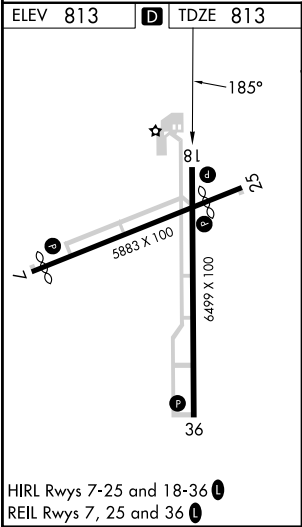
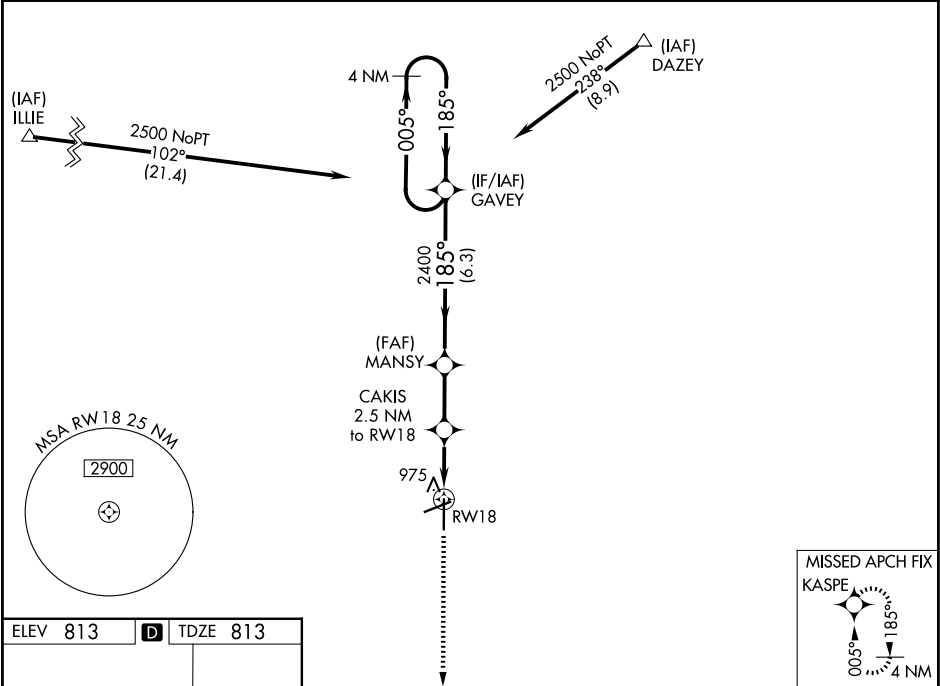
WAAS CH 70405 W18A	APP CRS 185°	Rwy Ldg TDZE Apt Elev	6499 813 813
--	------------------------	-----------------------------	---

RNAV (GPS) RWY 18

FINDLAY (FDY)

RNP APCH-GPS.	For uncompensated Baro-VNAV systems, LNAV/VNAV NA below -16°C or above 47°C. Baro-VNAV and VDP NA when using Lima Allen County altimeter setting. When local altimeter setting not received, use Lima Allen County altimeter setting: increase all DAs/MDAs 80 feet; increase LNAV Cat C/D and Circling Cat C/D visibility ¼ SM. Circling Rwy 7 NA at night.	MISSED APPROACH: Climb to 2600 direct KASPE and hold.
---------------	--	--

ASOS 132.85	TOLEDO APP CON 120.8 317.55	UNICOM 122.725 (CTAF) 0
-----------------------	---------------------------------------	-----------------------------------



2600	KASPE	CAKIS 2.5 NM to RW18	MANSY 2400	GAVEY 4 NM Holding Pattern
*LNAV only	*1.4 NM to RW18	*1.4 NM to RW18	*1640	GP 3.00° TCH 43
1.4 NM	1.1 NM	2.3 NM	6.3 NM	
CATEGORY	A	B	C	D
LPV DA	1063-1 250 (300-1)			
LNAV/VNAV DA	1320-1¾ 507 (600-1¾)			
LNAV MDA	1300-1	487 (500-1)	1300-1⅜ 487 (500-1⅜)	1300-1½ 487 (500-1½)
CIRCLING	1440-1	627 (700-1)	1440-1¾ 627 (700-1¾)	1540-2¼ 727 (800-2¼)