

LOC/DME I-UKI	APP CRS	Rwy Idg	4423
109.1	155°	TDZE	617
Chan 28		Apt Elev	617

LOC RWY 15

UKIAH MUNI (UKI)

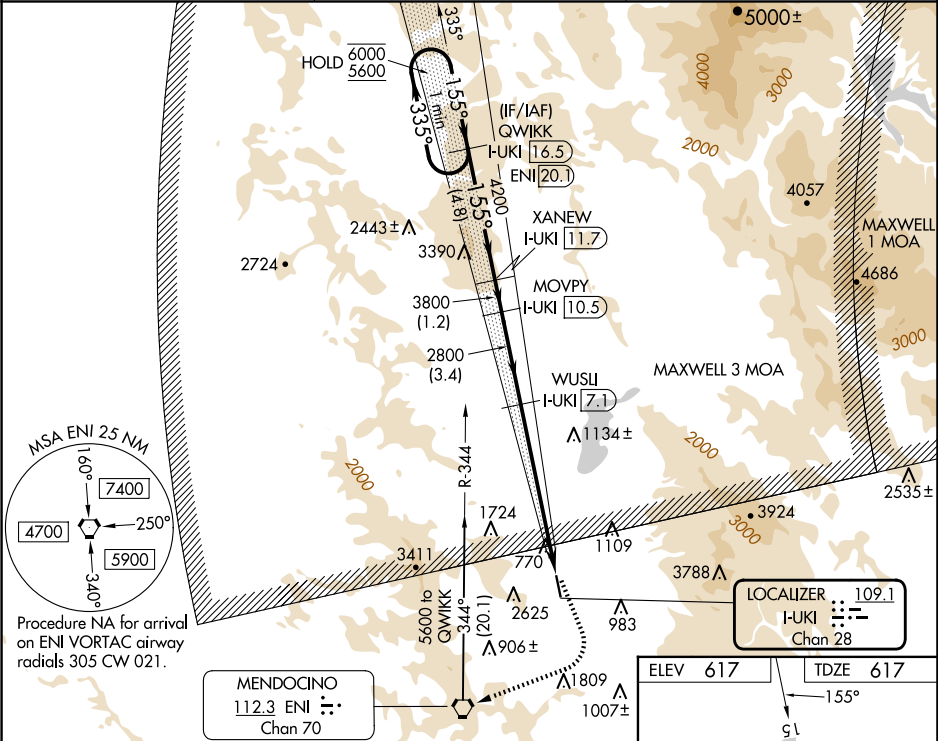
DME required.

**V** Circling NA southwest of Rwy 15-33. Circling Rwy 33 NA at night. Rwy 15 helicopter visibility reduction below 3/4 SM NA. When local altimeter setting not received, procedure NA.

**A**

MISSED APPROACH: Climbing left turn to 4100 on heading 145° then climbing right turn to 5600 direct ENI VORTAC and on ENI VORTAC R-344 to QWIKK /I-UKI 16.5 DME and hold.

ASOS	OAKLAND CENTER	UNICOM
119.275	127.8 353.5	123.0 (CTAF) 0



VGSI and descent angles not coincident (VGSI Angle 3.00/TCH 29).				
<div>One Minute Holding Pattern</div> <div>6000 ← 335° 5600 155° →</div> <div>4200 3800 2800 3.20° TCH 40</div> <div>4.8 NM 1.2 3.4 NM 1.2 NM 5.1 NM</div>				
CATEGORY	A	B	C	D
S-LOC 15	2300-1¼ 1683 (1700-1¼)	2300-1½ 1683 (1700-1½)	2300-3	1683 (1700-3)
CIRCLING	2300-1¼ 1683 (1700-1¼)	2300-1½ 1683 (1700-1½)	2300-3 1683 (1700-3)	2780-3 2163 (2200-3)

ELEV 617 TDZE 617

155°

51

4423 X 150

0.35 UP

33

MIRL Rwy 15-33

REIL Rws 15 and 33

FAF to MAP 6.3 NM

Knots	60	90	120	150	180
Min:Sec	6:18	4:12	3:09	2:31	2:06

SW-2, 07 AUG 2025 to 04 SEP 2025

SW-2, 07 AUG 2025 to 04 SEP 2025