

LEXINGTON, KENTUCKY

AL-697 (FAA)

25163

VOR/DME HYK 112.6 Chan 73	APP CRS 304°	Rwy Ldg TDZE Apt Elev	N/A N/A 979
---	------------------------	-----------------------------	--

VOR-A
BLUE GRASS (LEX)

T When local altimeter setting not received, use Frankfurt altimeter setting and increase all MDAs 80 feet and visibility Cats C and D $\frac{1}{4}$ SM.

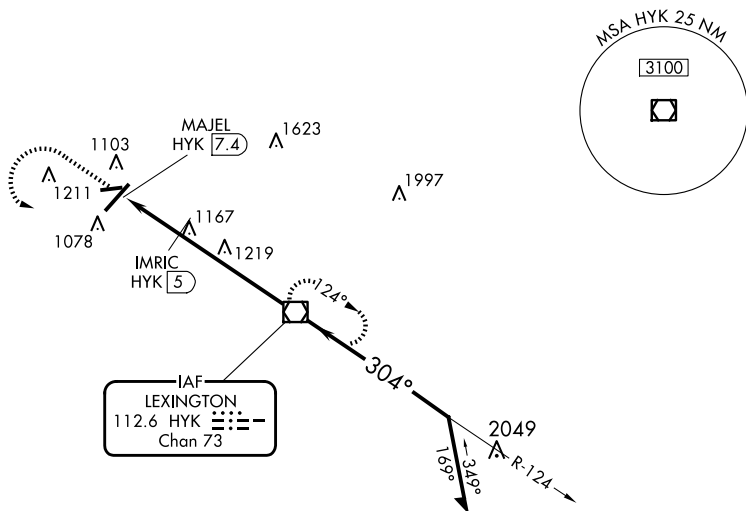
MISSED APPROACH: Climb to 3100 then left turn direct HYK VOR/DME and hold.

ATIS
126.3

LEXINGTON APP CON		
120.15	259.3	(040°-220°)
120.75	298.9	(221°-039°)

LEXINGTON TOWER
119.1 257.8

GND CON
121.9

CLNC DEL
132.35

SE-1, 07 AUG 2025 to 04 SEP 2025

3100

HYK

HYK

Remain
within 10 NM

MAJEL
HYK 7.

IMRIC
HYK 5

3100

*1620 when using Frankfort
altimeter setting.

CATEGORY

A

B

[illegible]

TDZ/CL Rwy 4
REIL Rwy 9, 22 and 27
HIRL Rwy 4-22
MIRL Rwy 9-27

FAF to MAP 7.4 NM

Knots	60	90	120	150	180
Min:Sec	7:24	4:56	3:42	2:58	2:28

LEXINGTON, KENTUCKY

Amdt 9C 08OCT20

38° 02'N - 84° 37'W

BLUE GRASS (LEX)

VOR-A