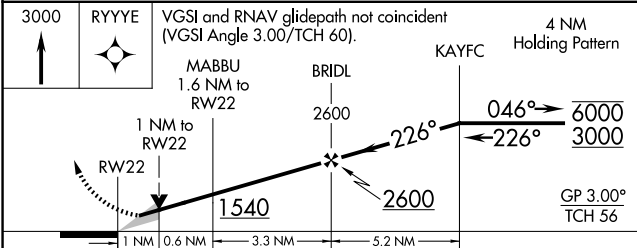
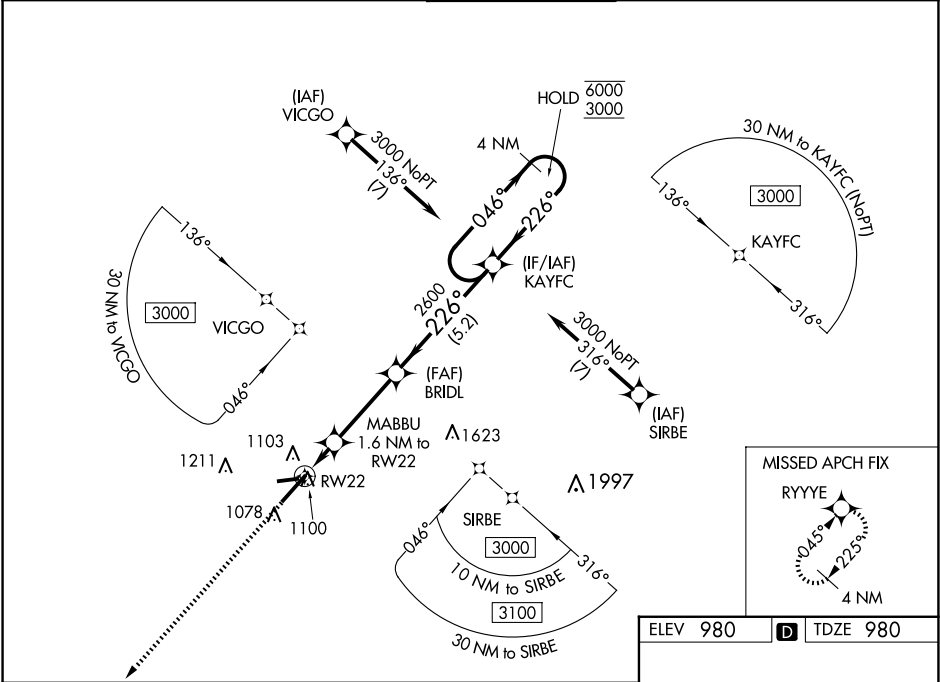


WAAS CH 90201 W22A	APP CRS 226°	Rwy Ldg TDZE 980 Apt Elev 980	7004 980 980
--	------------------------	---	---

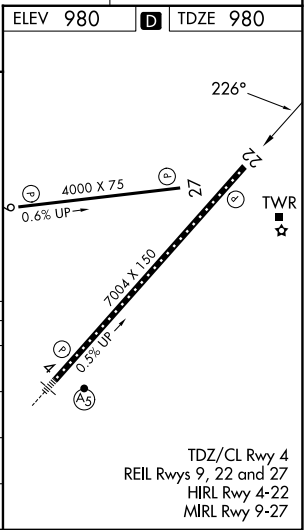
RNAV (GPS) RWY 22
BLUE GRASS (LEX)

RNP APCH - GPS.		MISSED APPROACH: Climb to 3000 direct RYYYE and hold.
<div><div><div><div><div></div><div></div></div><div><div></div><div></div></div></div><div><div></div><div></div></div></div></div>	For uncompensated Baro-VNAV systems, LNAV/VNAV NA below -13°C or above 54°C.	

ATIS 126.3	LEXINGTON APP CON 120.15 259.3 (040°-220°) 120.75 298.9 (221°-039°)	LEXINGTON TOWER 119.1 257.8	GND CON 121.9	CLNC DEL 132.35
----------------------	---	---------------------------------------	-------------------------	---------------------------



CATEGORY	A	B	C	D
LPV DA		1180-¾	200 (200-¾)	
LNAV/VNAV DA		1261-⅞	281 (300-⅞)	
LNAV MDA		1360-1	380 (400-1)	
CIRCLING	1420-1 440 (500-1)	1440-1 460 (500-1)	1520-1½ 540 (600-1½)	1600-2 620 (700-2)



SE-1, 07 AUG 2025 to 04 SEP 2025

SE-1, 07 AUG 2025 to 04 SEP 2025