

LOC I-GNJ <u>111.75</u>	APP CRS 226°	Rwy Ldg TDZE Apt Elev	7004 979 979
-----------------------------------	------------------------	-----------------------------	---

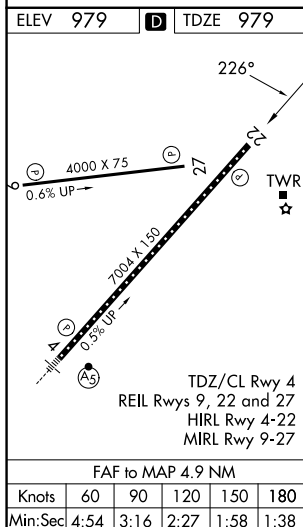
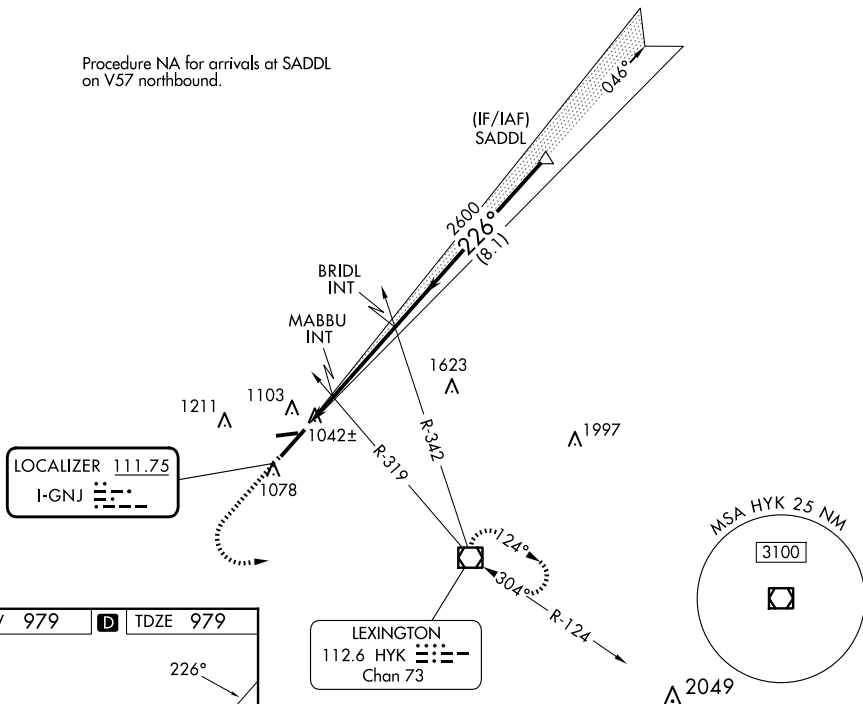
ILS or LOC RWY 22
BLUE GRASS (LEX)

- T** When local altimeter setting not received, use Frankfort altimeter setting: increase
A S-ILS 22 DA to 1241 feet and all visibilities $\frac{1}{8}$ SM; increase all MDAs 80 feet and
 visibility Cats C and D $\frac{1}{4}$ SM.

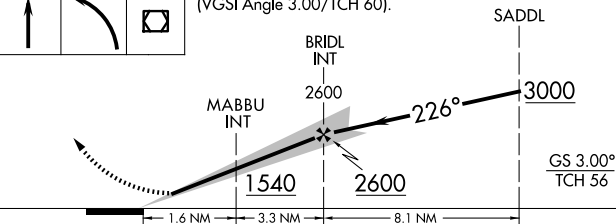
MISSED APPROACH: Climb to 1400 then climbing left turn to 3100 direct HYK VOR/DME and hold, continue climb-in-hold to 3100.


ATIS 126.3	LEXINGTON APP CON 120.15 259.3 (040°-220°) 120.75 298.9 (221°-039°)	LEXINGTON TOWER 119.1 257.8	GND CON 121.9	CLNC DEL 132.35
----------------------	---	---------------------------------------	-------------------------	---------------------------

Procedure NA for arrivals at SADDL on V57 northbound.



1400	3100	HYK	VGSI and ILS glidepath not coincident (VGSI Angle 3.00/TCH 60).
------	------	-----	---



CATEGORY	A	B	C	D
S-ILS 22	1179- ³ / ₄ 200 (200- ³ / ₄)			
S-LOC 22	1360-1 381 (400-1)	1360-1 ¹ / ₈ 381 (400-1 ¹ / ₈)		
 CIRCLING	1420-1 441 (500-1)	1440-1 461 (500-1)	1520-1 ¹ / ₂ 541 (600-1 ¹ / ₂)	1600-2 621 (700-2)