

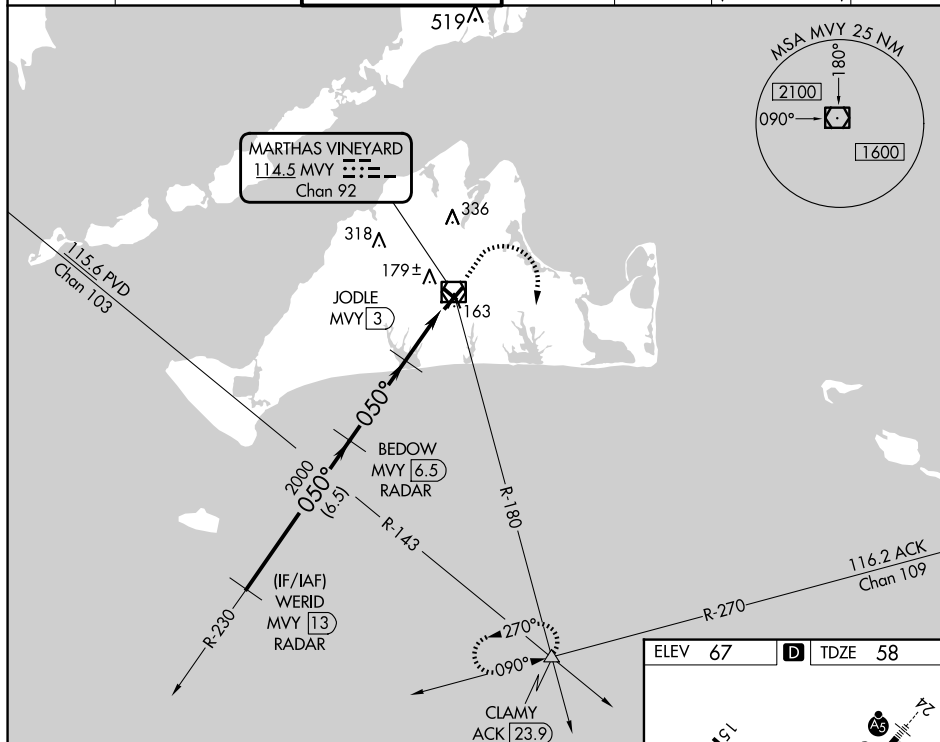
VOR/DME MVY	APP CRS	Rwy Idg	<b>5504</b>
<b>114.5</b>	<b>050°</b>	TDZE	<b>58</b>
Chan <b>92</b>		Apt Elev	<b>67</b>

VOR RWY 6  
MARTHA'S VINEYARD (MVY)

**T** DME required. Rwy 6 helicopter visibility reduction below  $\frac{3}{4}$  SM NA.  
**A** VDP NA with Hyannis altimeter setting. When local altimeter setting not received, use Hyannis altimeter setting and increase all MDA 60 feet; increase S-6 Cats C and D visibility  $\frac{1}{4}$  mile. Night landing: Rwy 15 NA.

**MISSED APPROACH:** Climb to 500 then climbing right turn to 2500 via MVY VOR/DME R-180 to CLAMY INT/ACK 23.9 DME and hold.

ATIS <b>126.25</b>	BOSTON APP CON <b>133.75</b>	VINEYARD TOWER ★ <b>121.4</b> (CTAF) <b>0</b>	GND CON <b>124.35</b>	CLNC DEL <b>124.35</b>	CLNC DEL <b>119.7</b> (When twr closed)	UNICOM <b>122.95</b>
-----------------------	---------------------------------	--	--------------------------	---------------------------	---	-------------------------



## RADAR REQUIRED

