

WAAS CH 42601 W06A	APP CRS 056°	Rwy Idg 5504 TDZE 58 Apt Elev 67
----------------------------------------	------------------------	-------------------------------------------------------------

RNAV (GPS) RWY 6

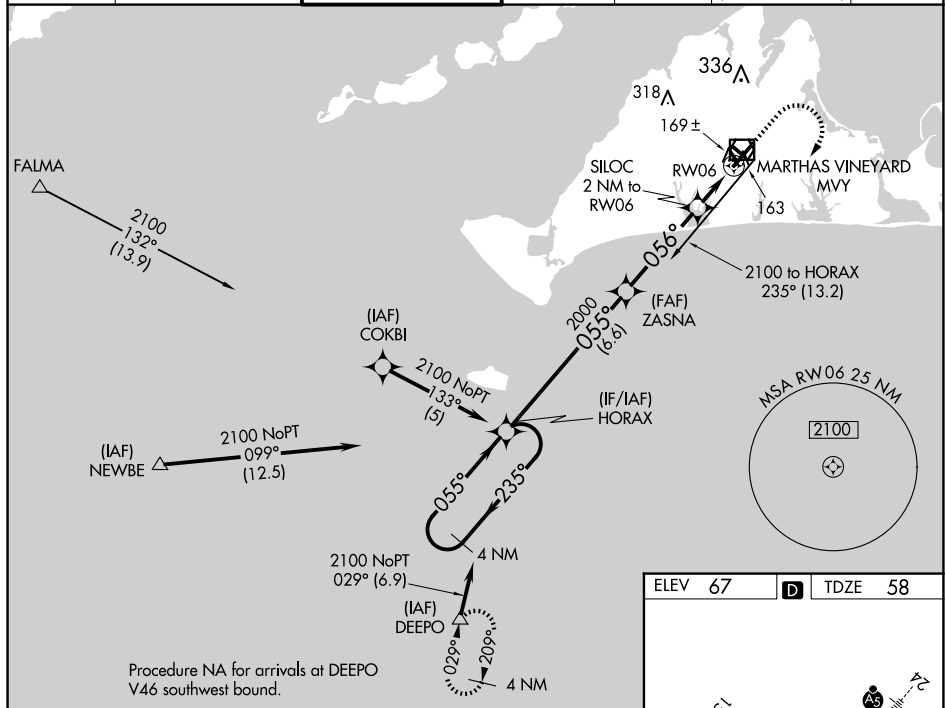
MARTHA'S VINEYARD (MVY)

RNP APCH.

T Rwy 6 helicopter visibility reduction below $\frac{3}{4}$ SM NA. VDP and Baro-VNAV NA when using Hyannis
A altimeter setting. For uncompensated Baro-VNAV systems, LNAV/VNAV NA below -15°C or above
 43°C. When local altimeter setting not received, use Hyannis altimeter setting and increase LPV DA
 to 362 feet and all Cats visibility by $\frac{1}{4}$ SM, increase LNAV/VNAV DA to 408 feet and all Cats
 visibility $\frac{1}{8}$ SM; increase all MDAs 60 feet and Cats C and D visibility $\frac{1}{4}$ SM. Circling Rwy 15 NA
 at night.

MISSED APPROACH:
Climb to 800 then
climbing right turn to
3000 direct DEEPO
and hold.

ATIS 126.25	BOSTON APP CON 133.75	VINEYARD TOWER ★ 121.4 (CTAF) 0	GND CON 124.35	CLNC DEL 124.35	CLNC DEL 119.7 (When twr closed)	UNICOM 122.95
-----------------------	---------------------------------	-------------------------------------------	--------------------------	---------------------------	-----------------------------------------------	-------------------------

[illegible]