
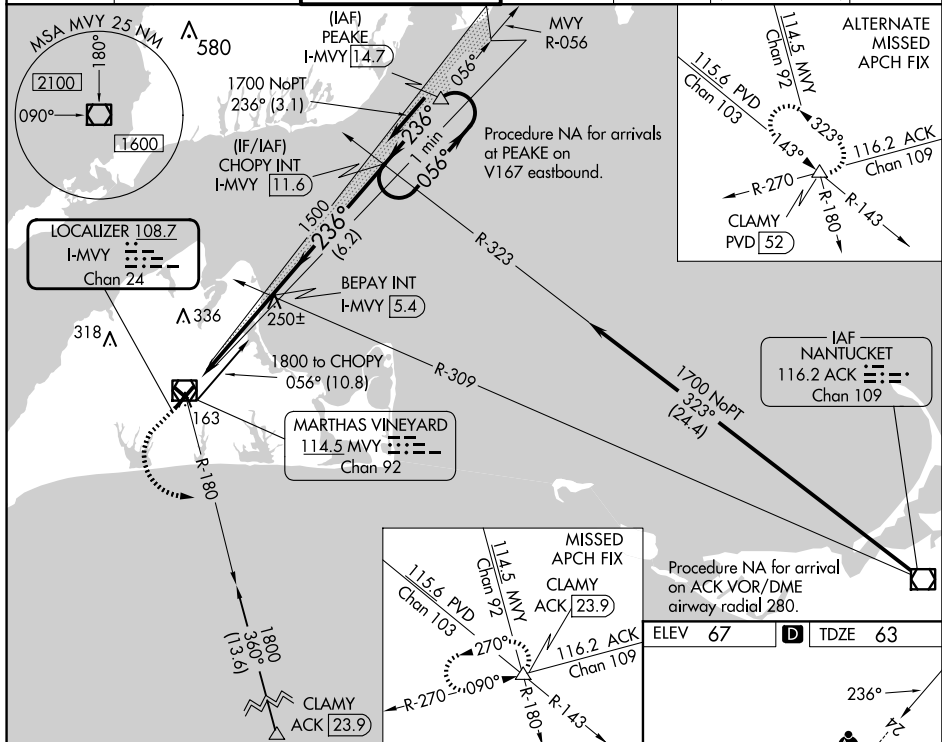


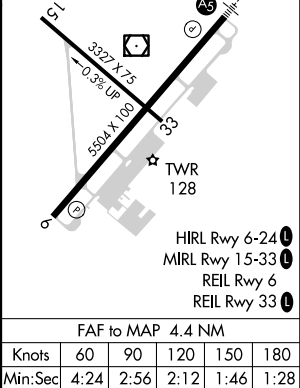
ILS or LOC RWY 24

- | | |
|--|---|
| <p>MALSR</p>  | <p>MISSED APPROACH:
 Climb to 800 then
 climbing left turn to 2500
 on MYY VOR/DME R-180
 to CLAMY INT/ACK 23.9
 DME and hold.</p> |
|--|---|

ATIS 126.25	BOSTON APP CON 133.75	VINEYARD TOWER ★ 121.4 (CTAF) 0	GND CON 124.35	CLNC DEL 124.35	CLNC DEL 119.7 (When twr closed)	UNICOM 122.95
-----------------------	---------------------------------	---	--------------------------	---------------------------	---	-------------------------



		Use I-MVY DME when on the localizer course.	
800 		2500 	
CLAMY 		BEPAY INT I-MVY 5.4	
CHOPY INT I-MVY 11.6		One Minute Holding Pattern	
*LOC only			
I-MVY 1 		I-MVY 2.3 	
1.2 NM		3.2 NM	
1500		1500	
236°		056° 1700	
GS 3.00° TCH 51		236°	
CATEGORY	A	B	C
S-ILS 24 **	263/24 200 (200-½)		
S-LOC 24	500/24	437 (500-½)	500/40 437 (500-¾)
CIRCLING	500-1 433 (500-1)	540-1 473 (500-1)	700-1¾ 633 (700-1¾) 780-2¼ 713 (800-2¼)



NE-1, 07 AUG 2025 to 04 SEP 2025

NE-1, 07 AUG 2025 to 04 SEP 2025