

WAAS
CH **72901**
W30B

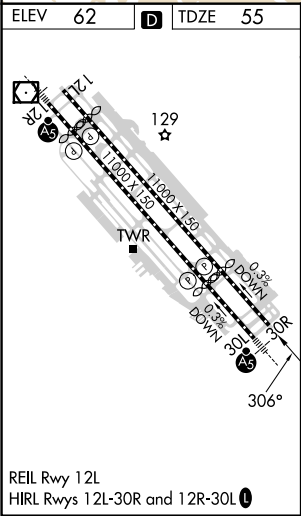
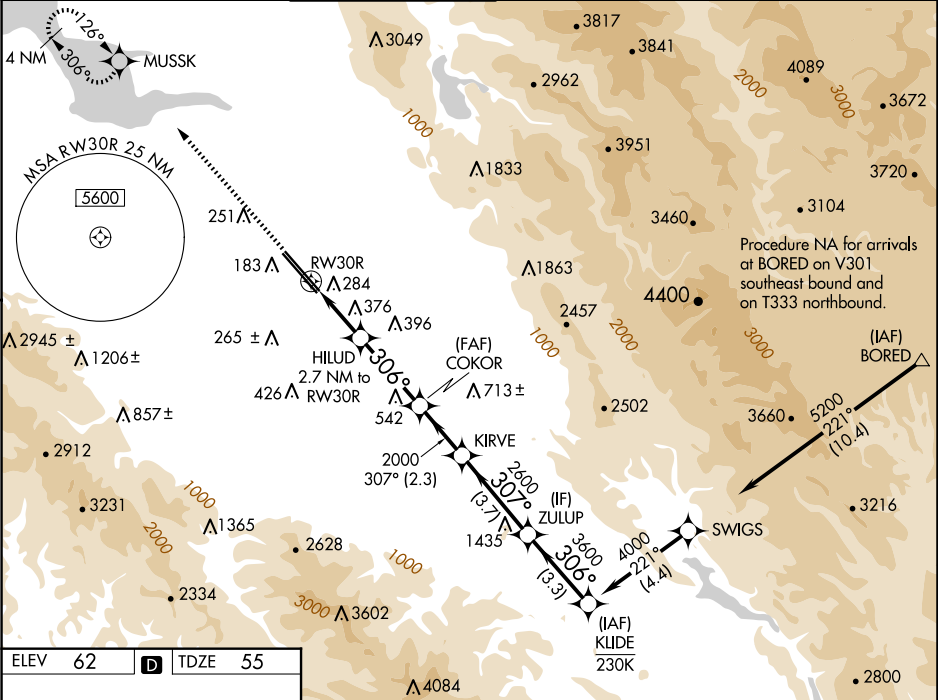
APP CRS
306°

Rwy Idg
TDZE **55**
Apt Elev **62**

RNAV (GPS) Y RWY 30R

NORMAN Y MINETA SAN JOSE INTL (SJC)

RNP APCH-GPS. ▼ For uncompensated Baro-VNAV systems, LNAV/VNAV NA below -1°C or above 54°C.				MISSED APPROACH: Climb to 2300 direct MUSSK and hold.		
D-ATIS 126.95	NORCAL APP CON 120.1 290.25	SAN JOSE TOWER ★ 124.0 (CTAF) 0 257.6		GND CON 121.7	CLNC DEL 118.0	CPDLC UNICOM 122.95



2300 MUSSK		VGSI and RNAV glidepath not coincident (VGSI Angle 3.00/TCH 69°).			
HILUD 2.7 NM to RW30R		COKOR	KIRVE	ZULUP	KLIDE
1.6 NM to RW30R		2000	2000	2600	4000
RW30R		306°	307°	306°	306°
1.6 NM		1.1 NM	3.2 NM	2.3 NM	3.7 NM
CATEGORY		A	B	C	D
LPV DA		255- ³ / ₄ 200 (200- ³ / ₄)			
LNAV/VNAV DA		541-1 ³ / ₈ 486 (500-1 ³ / ₈)			
LNAV MDA		640-1 585 (600-1)		640-1 ³ / ₄ 585 (600-1 ³ / ₄)	
C CIRCLING		640-1 578 (600-1)	700-1 638 (700-1)	700-1 ³ / ₄ 638 (700-1 ³ / ₄)	700-2 638 (700-2)