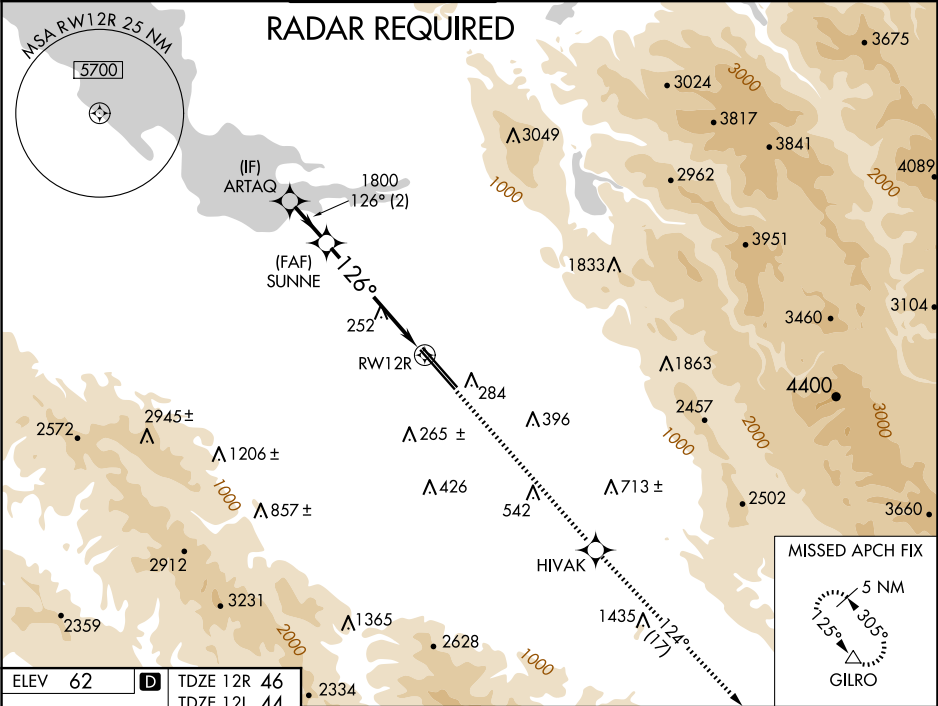


WAAS CH 90106 W12A	APP CRS 126°	Rwy ldg 12R 8587 12L 8831 TDZE 46 Apt Elev 62
--	------------------------	---

RNAV (GPS) Y RWY 12R
NORMAN Y MINETA SAN JOSE INTL (SJC)

For uncompensated Baro-VNAV systems, LNAV/VNAV NA below -1°C (31°F) or above 54°C (130°F). DME/DME RNP-0.3 NA. For inoperative MALSRL, increase LNAV/VNAV all Cats visibility to 1 mile and LNAV Cats C/D visibility to 1½ mile.	MALSRL Rwy 12R	MISSED APPROACH: Climb to 4600 direct H1VAK and on track 124° to GILRO and hold.
--	-------------------	--

D-ATIS 126.95	NORCAL APP CON 120.1 290.25	SAN JOSE TOWER ★ 124.0 (CTAF) 0 257.6	GND CON 121.7	CLNC DEL 118.0	CPDLC	UNICOM 122.95
-------------------------	---------------------------------------	---	-------------------------	--------------------------	-------	-------------------------



ELEV 62	D	TDZE 12R 46 TDZE 12L 44	VGSI and RNAV glidepath not coincident (VGSI Angle 3.00/TCH 75).				4600	H1VAK	tr 124°	GILRO
			ARTAQ				SUNNE			
			1800				1800			
			GP 3.00° TCH 58				*1.3 NM to RWY 12R			
			2 NM				4.1 NM			
			1.3 NM							
			CATEGORY				A B C D			
			LPV DA				246-½ 200 (200-½)			
			LNAV/VNAV DA				371-5/8 325 (400-5/8) 371-1 325 (400-1)			
			LNAV MDA				520-½ 474 (500-½) 520-1 474 (500-1)			
			SIDESTEP 12L				520-1 476 (500-1) 520-1½ 476 (500-1½) 520-2 476 (500-2)			