

APP CRS

Rwy Idg

7597

306°

TDZE

55

Apt Elev

62

RNAV (RNP) Z RWY 30R

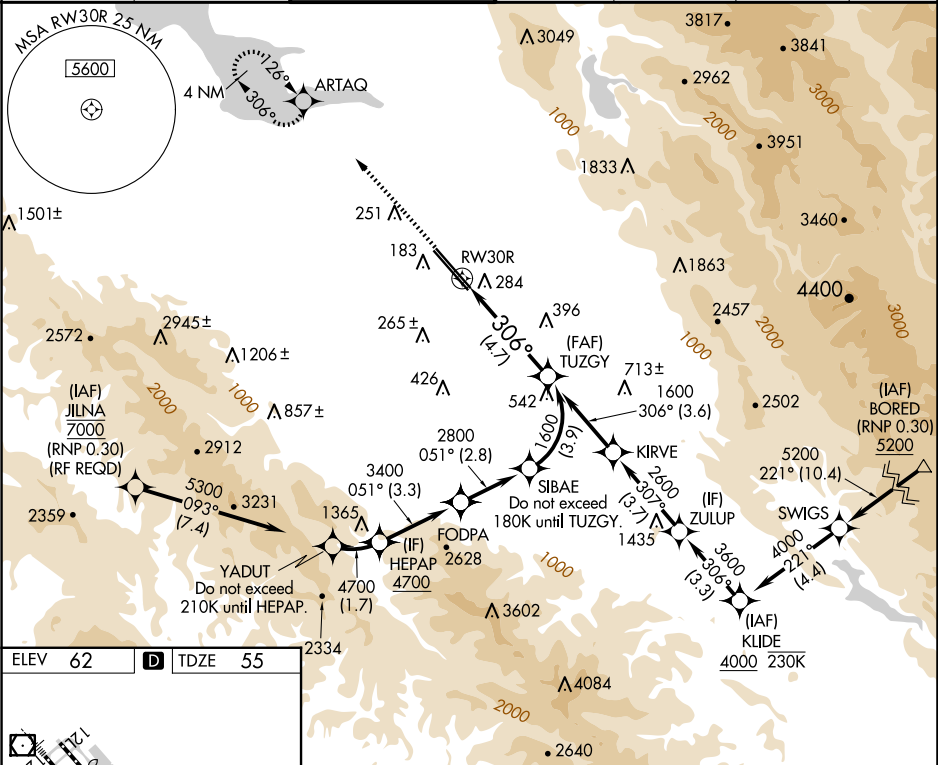
NORMAN Y MINETA SAN JOSE INTL (SJC)

RNP AR APCH.

For uncompensated Baro-VNAV systems, procedure NA below 1°C or above 54°C.

MISSED APPROACH: Climb to 600 then climb to 2000 direct ARTAQ and hold.

D-ATIS 126.95	NORCAL APP CON 120.1 290.25	SAN JOSE TOWER ★ 124.0 (CTAF) 0 257.6	GND CON 121.7	CLNC DEL 118.0	CPDLC	UNICOM 122.95
------------------	--------------------------------	--	------------------	-------------------	-------	------------------



ELEV 62

D

TDZE 55

REIL Rwy 12L

HIRL Rwy 12L-30R and 12R-30L

600 2000 ARTAQ

VGSI and RNAV glidepath not coincident (VGSI Angle 3.00/TCH 69).

See planview for multiple IF locations.

RW30R

306°

1600

GP 3.00° TCH 55

CATEGORY	A	B	C	D
RNP 0.11 DA		377-1	322 (400-1)	
RNP 0.20 DA		472-1½	417 (500-1½)	
RNP 0.30 DA		538-1¾	483 (500-1¾)	

AUTHORIZATION REQUIRED