

APP CRS  
**126°**

Rwy Idg  
TDZE  
Apt Elev  
**8831**  
**44**  
**62**

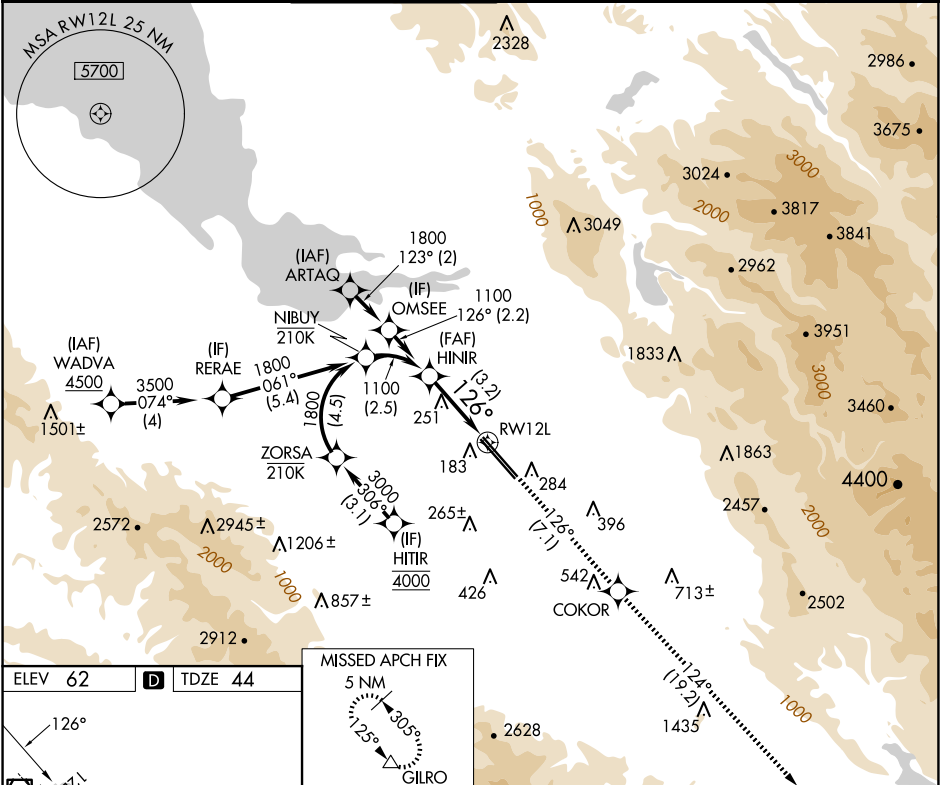
**RNAV (RNP) Z RWY 12L**  
NORMAN Y MINETA SAN JOSE INTL (SJC)

RNP AR APCH-GPS.

▼ For uncompensated Baro-VNAV systems, procedure NA below 0°C or above 54°C.

MISSED APPROACH: Climb to 4600 on track 126° to COKOR and track 124° to GILRO and hold.

D-ATIS <b>126.95</b>	NORCAL APP CON <b>120.1 290.25</b>	SAN JOSE TOWER★ <b>124.0</b> (CTAF) <b>0 257.6</b>	GND CON <b>121.7</b>	CLNC DEL <b>118.0</b>	CPDLC	UNICOM <b>122.95</b>
-------------------------	---------------------------------------	-------------------------------------------------------	-------------------------	--------------------------	-------	-------------------------



ELEV 62

**D**

TDZE 44

GP 3.00°  
TCH 57

See planview for multiple IF locations.

3.2 NM

CATEGORY	A	B	C	D
RNP 0.18 DA	400-1 356 (400-1)			
RNP 0.30 DA	451-1½ 407 (400-1½)			

**AUTHORIZATION REQUIRED**