

LOC/DME I-SJC	30L 30R
110.9	7614 7597
Chan 46	57 55
APP CRS	Rwy ldg
306°	TDZE
	62 62
	Apt Elev

ILS or LOC RWY 30L

NORMAN Y MINETA SAN JOSE INTL (SJC)

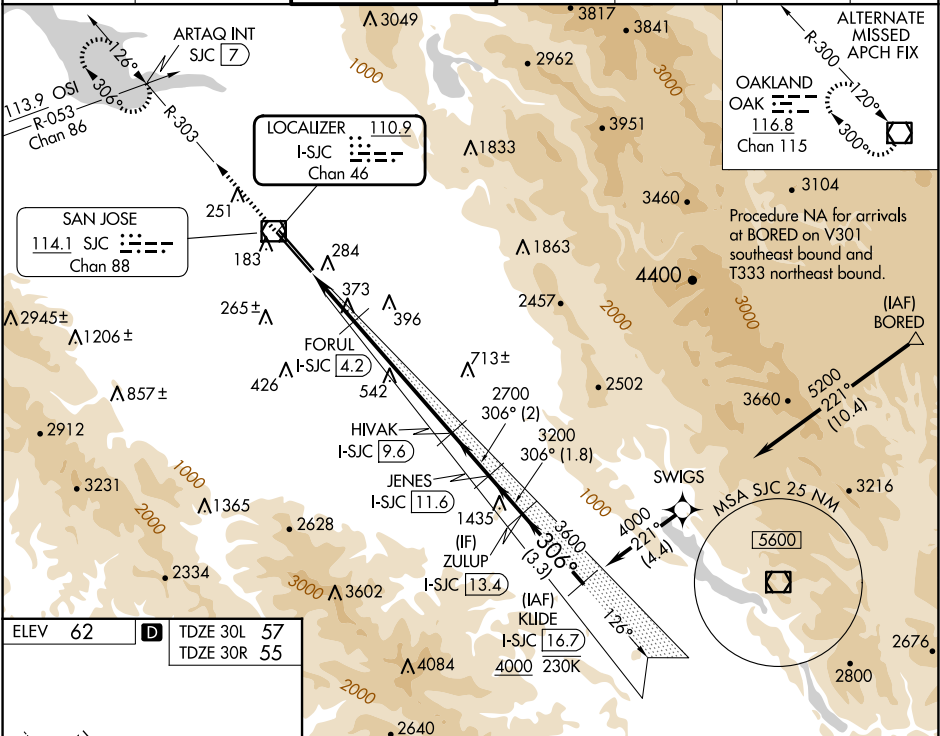
RNAV 1-GPS or RADAR required for procedure entry. DME required.
From BORED: RNAV 1-GPS required.

RVR 1800 authorized with use of FD or AP or HUD to DA.

MALSR
Rwy 30L

MISSED APPROACH: Climb to 1900 on SJC
VOR/DME R-303 to ARTAQ INT/SJC 7 DME
and hold.

D-ATIS 126.95	NORCAL APP CON 120.1 290.25	SAN JOSE TOWER * 124.0 (CTAF) 0 257.6	GND CON 121.7	CLNC DEL 118.0	CPDLC	UNICOM 122.95
-------------------------	---------------------------------------	---	-------------------------	--------------------------	-------	-------------------------



ELEV 62

TDZE 30L 57
TDZE 30R 55

REIL Rwy 12L
HIRL Rwy 12L-30R and 12R-30L

Diagram showing the runway layout and the ILS/LOC for Runway 30L, including the localizer (110.9) and glideslope (306°).

VGS and ILS glidepath not coincident (VGS Angle 3.00°/TCH 70°).			
SJC R-303			
*LOC only			
*I-SJC			
1.6 NM 1.2 NM 5.3 NM 2 NM 1.8 NM 3.3 NM			
CATEGORY	A	B	C
S-ILS 30L#	257/24 200 (200-1/2)		
S-LOC 30L	640/24	583 (600-1/2)	640-1 1/4 583 (600-1 1/4)
SIDESTEP 30R	640-1	585 (600-1)	640-1 3/4 585 (600-1 3/4)

SW-2, 07 AUG 2025 to 04 SEP 2025

SW-2, 07 AUG 2025 to 04 SEP 2025