

LOC/DME I-SJC	APP CRS	Rwy Idg
<b>110.9</b>	<b>306°</b>	<b>7614</b>
Chan 46		TDZE <b>57</b>
		Apt Elev <b>62</b>

ILS RWY 30L (SA CAT I & II)

NORMAN Y MINETA SAN JOSE INTL (SJC)

RNAV 1-GPS or RADAR required for procedure entry. DME required.  
From BORED: RNAV 1-GPS required.

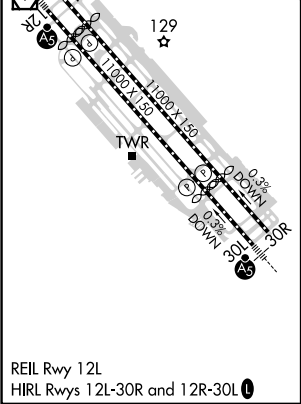
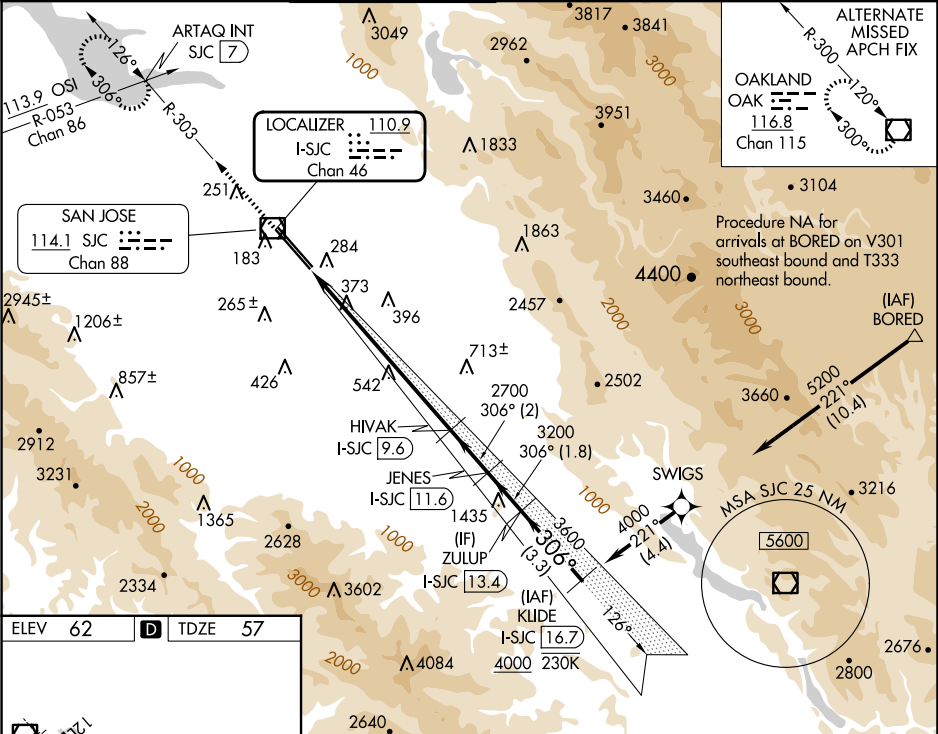
MALSR

MISSED APPROACH: Climb to 1900 on SJC VOR/DME R-303 to ARTAQ INT/SJC 7 DME and hold.

SA CAT I: Requires specific OPSPEC, MSPEC, or LOA approval and use of HUD to DH.

SA CAT II: Reduced lighting: requires specific OPSPEC, MSPEC, or LOA approval and use of autoland or HUD to touchdown. SA CAT I/II: Procedure NA when tower closed.

D-ATIS	NORCAL APP CON	SAN JOSE TOWER★	GND CON	CLNC DEL	CPDLC	UNICOM
<b>126.95</b>	<b>120.1 290.25</b>	<b>124.0 (CTAF) 257.6</b>	<b>121.7</b>	<b>118.0</b>		<b>122.95</b>



ELEV 62		D	TDZE 57
REIL Rwy 12L		HIRL Rwy 12L-30R and 12R-30L	
CATEGORY		A	B
S-ILS 30L		SA CAT I	RA 147/14 150 DA 207
S-ILS 30L		SA CAT II	RA 97/12 100 DA 157
SA CATEGORY I & II ILS - SPECIAL AIRCREW & AIRCRAFT CERTIFICATION REQUIRED			