

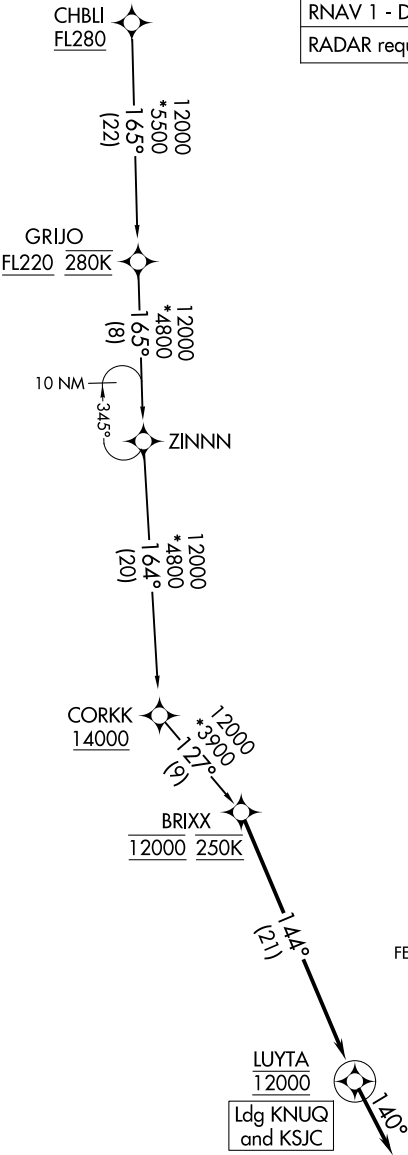
BR1XX FUR ARRIVAL (RNAV)

AL-693 (FAA)

SAN JOSE, CALIFORNIA

OAKLAND CENTER  
125.85 323.0  
NORCAL APP CON  
133.95 317.6  
NUQ ATIS  
124.175 283.0  
SJC D-ATIS  
126.95  
NUQ GND CON  
121.85 278.95  
SJC GND CON  
121.7  
MOFFETT TOWER\*  
119.55 259.65  
SAN JOSE TOWER\*  
124.0 257.6

RNAV 1 - DME/DME/IRU or GPS.  
RADAR required.



NOTE: Chart not to scale.

ARRIVAL ROUTE DESCRIPTION

CHBLI TRANSITION (CHBLI.BR1XX4)

LANDING KSJC/KNUQ: From BR1XX on track 144° to cross LUYTA at 12000, then on track 140°. Expect RADAR vectors to final approach course.

BR1XX FUR ARRIVAL (RNAV)

SAN JOSE, CALIFORNIA