

23054

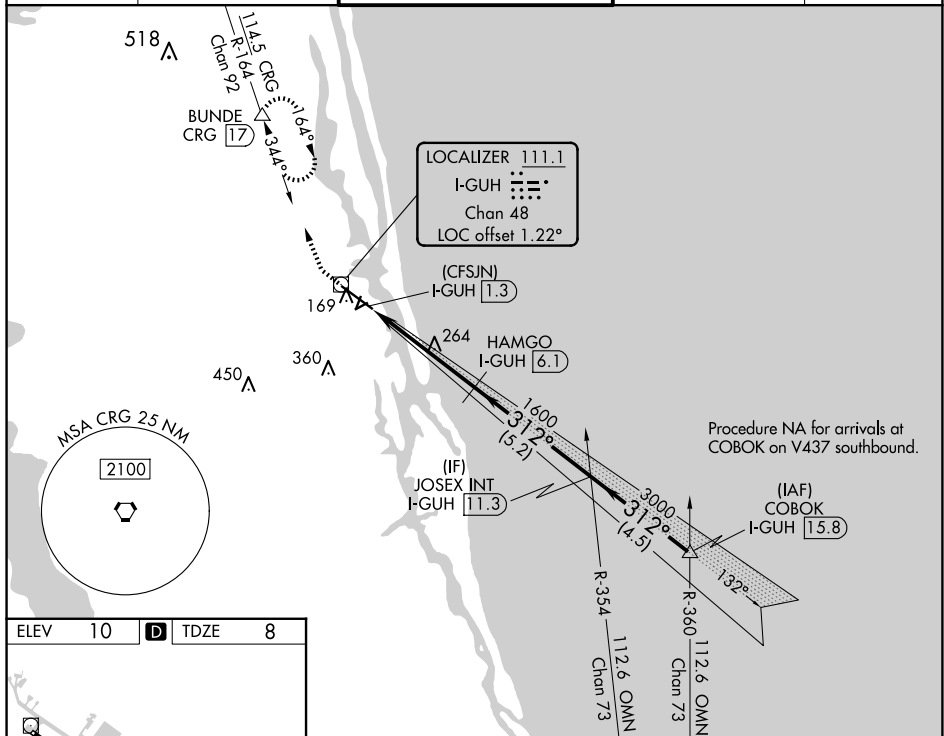
ILS or LOC RWY 31  
NORTHEAST FLORIDA RGNL (SGJ)

**MISSED APPROACH:** Climb to 3000 on heading 312° and on CRG VORTAC R-164 to BUNDE/CRG 17 DME and hold, continue climb-in-hold to 3000.

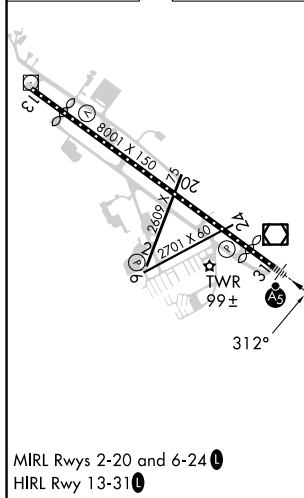


Circling Rwy 2, 6 NA at night. For inop ALS, increase S-LOC 31 Cat C/D visibility to  $1\frac{3}{8}$  SM.

ATIS 119.625	JACKSONVILLE APP CON 120.75	ST AUGUSTINE TOWER ★ 127.625 (CTAF) 0 269.475	GND CON 121.175 251.125	UNICOM 122.95
-----------------	--------------------------------	--	----------------------------	------------------



ELEV	10	<b>D</b>	TDZE	8
------	----	----------	------	---



3000  
↑  
hdg 312°

CRG R-164

BUNDE △

VGSB and ILS glidepath not coincident (VGSB Angle 3.00/TCH 54).

JOSEX INT I-GUH 11.3

COBOK I-GUH 15.8

\*LOC only.

(CFSJN) I-GUH 1.3

I-GUH 2.7

HAMGO I-GUH 6.1

1600

312°

3000

312°

3000

GS 3.00° TCH 57

1.4 NM

3.4 NM

5.2 NM

4.5 NM

CATEGORY	A	B	C	D
S-ILS 31	258-½ 250 (300-½)			
S-LOC 31	520-½ 512 (600-½)	520-1 512 (600-1)		
CIRCLING	520-1 510 (600-1)	580-1 570 (600-1)	680-1¾ 670 (700-1¾)	740-2½ 730 (800-2½)

NORTHEAST FLORIDA RGNL (SGJ)  
ILS or LOC RWY 31

SE-3, 07 AUG 2025 to 04 SEP 2025