

VOR/DME RIW <b>114.05</b> Chan <b>87(Y)</b>	APP CRS <b>293°</b>	Rwy Idg TDZE Apt Elev	<b>8204</b> <b>5459</b> <b>5516</b>
---	------------------------	-----------------------------	---

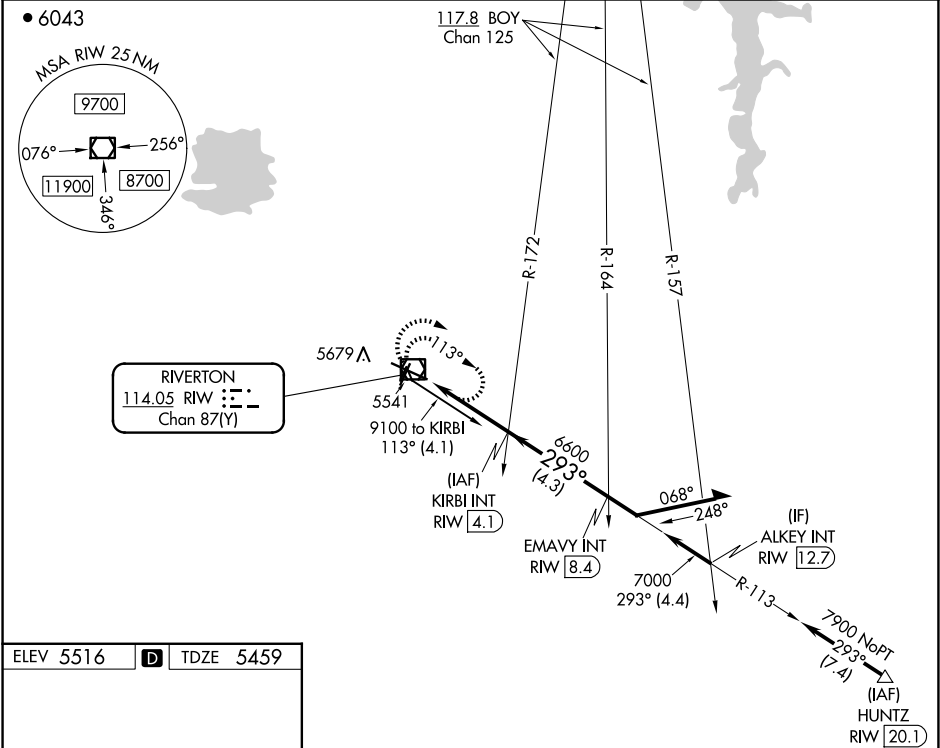
VOR RWY 28  
CENTRAL WYOMING RGNL (RIW)

**⚠** When local altimeter setting not received, use Lander altimeter setting and increase all MDA 60 feet. VDP NA when using Lander altimeter setting. For inop MALSRL, increase S-28 Cat C and D visibility to 1½ miles.

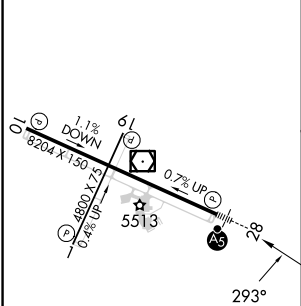
**MALSRL**

**MISSED APPROACH:** Climb to 7700 in RIW VOR/DME holding pattern.

ASOS <b>121.425</b>	SALT LAKE CENTER <b>133.25 285.6</b>	UNICOM <b>122.8 (CTAF)</b> <b>0</b>
------------------------	---	--



ELEV 5516	<b>D</b>	TDZE 5459
-----------	----------	-----------



- REIL Rwy 1, 10 and 19 **0**
- MIRL Rwy 1-19 **0**
- HIRL Rwy 10-28 **0**

7700	RIW	Remain within 10 NM			
RIW VOR/DME		RIW 1.9	2.99° TCH 50	6600	7900
		1.3	2.2 NM		
CATEGORY	A	B	C	D	
S-28	5920-½	461 (500-½)	5920-1	461 (500-1)	
<b>C</b> CIRCLING	6000-1	484 (500-1)	6000-1½ 484 (500-1½)	6120-2 604 (700-2)	

NW-1, 07 AUG 2025 to 04 SEP 2025

NW-1, 07 AUG 2025 to 04 SEP 2025