

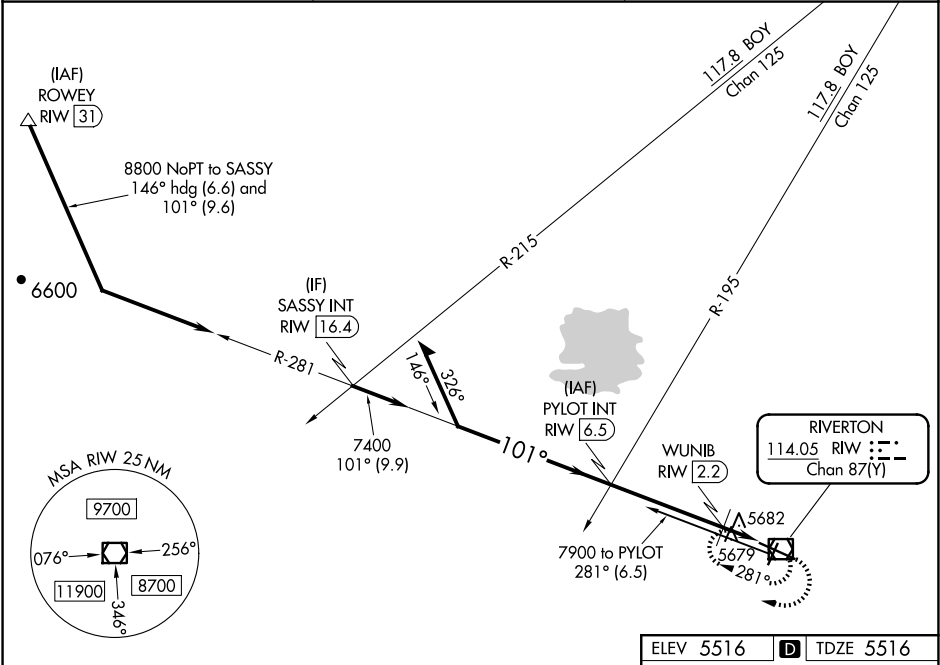
| | | |
|---|------------------------|---|
| VOR/DME RIW 114.05 Chan 87(Y) | APP CRS 101° | Rwy Idg 8204 TDZE 5516 Apt Elev 5516 |
|---|------------------------|---|

VOR RWY 10
CENTRAL WYOMING RGNL (RIW)

⚠ When local altimeter setting not received, use Lander altimeter setting and increase all MDA 60 feet and increase S-10 Cat C and D visibility ¼ mile and Circling Cat C visibility ½ mile, increase WUNIB fix minimums Cat C and D visibility ½ mile. Rwy 10 helicopter visibility reduction below ¾ SM NA.

MISSED APPROACH: Climb to 7900 in RIW VOR/DME holding pattern.

| | | |
|------------------------|---|---------------------------------|
| ASOS 121.425 | SALT LAKE CENTER 133.25 285.6 | UNICOM 122.8 (CTAF) 0 |
|------------------------|---|---------------------------------|



ELEV 5516 **D** TDZE 5516

7900 RIW

101° to VOR/DME

1.1% DOWN 61 8204 X-150 4800 Y-171 0.4% UP 5513 0.7% UP 28

Remain within 10 NM

PYLOT INT RIW 6.5

7800

101°

*6060 when using Lander altimeter setting.

7400

3.00° TCH 50

WUNIB RIW 2.2

RIW VOR/DME

*6000

4.3 NM 1.4 NM

| CATEGORY | A | B | C | D |
|-----------------------------------|--------|-------------|----------|--|
| S-10 | 6000-1 | 484 (500-1) | 6000-1 ¾ | 484 (500-1 ¾) |
| C CIRCLING | 6000-1 | 484 (500-1) | 6000-1 ½ | 6120-2 484 (500-1 ½) 604 (600-2) |
| WUNIB FIX MINIMUMS (DME REQUIRED) | | | | |
| S-10 | 5940-1 | 424 (500-1) | 5940-1 ¼ | 424 (500-1 ¼) |
| C CIRCLING | 6000-1 | 484 (500-1) | 6000-1 ½ | 6120-2 484 (500-1 ½) 604 (700-2) |