

WAAS CH <b>61115</b> <b>W28A</b>	APP CRS <b>284°</b>	Rwy Idg TDZE <b>5459</b> Apt Elev <b>5516</b>
--	------------------------	---

RNAV (GPS) RWY 28

CENTRAL WYOMING RGNL (RIW)

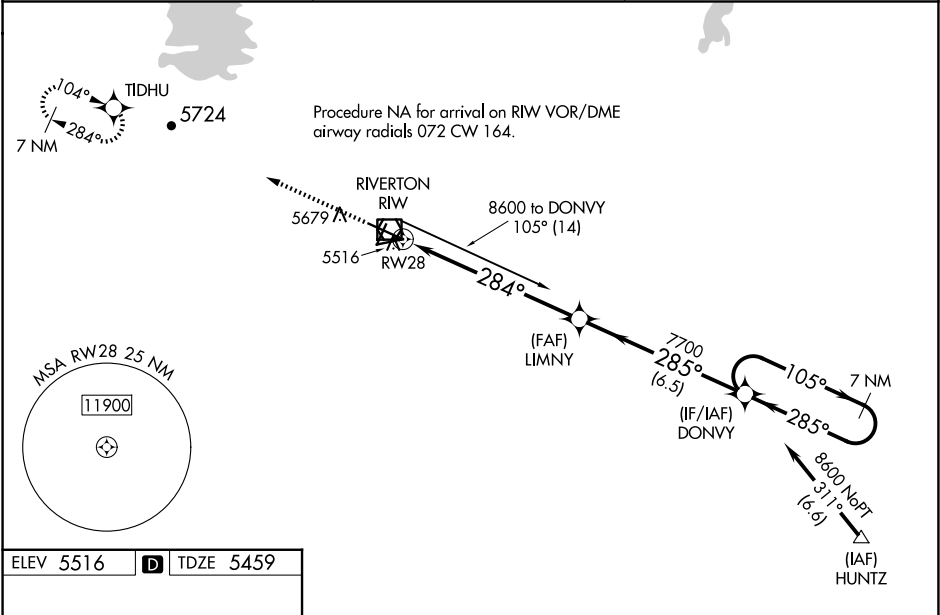
RNP APCH - GPS.

Baro-VNAV and VDP NA when using Lander altimeter setting. For uncompensated Baro-VNAV systems, LNAV/VNAV NA below -27°C or above 48°C. For inop MALSR, increase LNAV/VNAV all Cats visibility to ¾ mile and LNAV Cat C and D visibility to 1 mile. When local altimeter setting not received, use Lander altimeter setting: increase LPV DA to 5713 feet, LNAV/VNAV DA to 5763 and all visibilities ½ mile; increase all MDA 60 feet and LNAV Cat C and D visibility ½ mile. For inop MALSR, when using Lander altimeter setting, increase LPV all Cats visibility to ¾ mile and LNAV/VNAV all Cats visibility to 1 mile.

MALSR

MISSED APPROACH:  
Climb to 7900 direct  
TIDHU and hold.

ASOS <b>121.425</b>	SALT LAKE CENTER <b>133.25 285.6</b>	UNICOM <b>122.8</b> (CTAF) <b>1</b>
------------------------	---	--



7900 TIDHU

LIMNY 7700

DONVY 7700

8600

105°

285°

284°

1 NM to RW28

1 NM

5.9 NM

6.5 NM

GP 3.00°

TCH 50

CATEGORY	A	B	C	D
LPV DA	5659-½		200 (200-½)	
LNAV/VNAV DA	5709-½		250 (200-½)	
LNAV MDA	5820-½ 361 (400-½)		5820-⅝ 361 (400-⅝)	
CIRCLING	6000-1 484 (500-1)		6000-1½ 484 (500-1½) 6120-2 604 (700-2)	

REIL Rwy 1, 10, and 19 **1**  
MIRL Rwy 1-19 **1**  
HIRL Rwy 10-28 **1**

NW-1, 07 AUG 2025 to 04 SEP 2025

NW-1, 07 AUG 2025 to 04 SEP 2025