

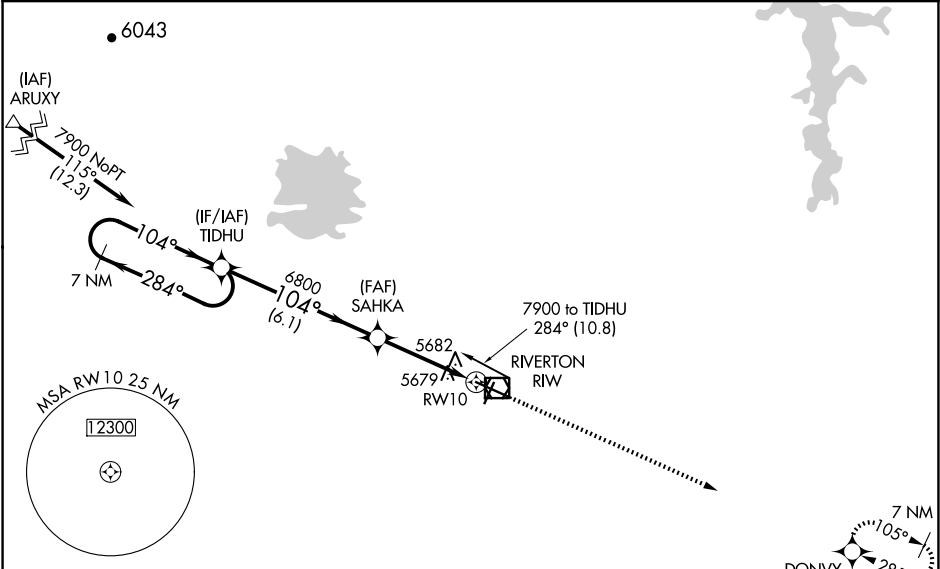
WAAS CH <b>42899</b> <b>W10A</b>	APP CRS <b>104°</b>	Rwy Idg TDZE <b>5516</b> Apt Elev <b>5516</b>
--	------------------------	---

RNAV (GPS) RWY 10  
CENTRAL WYOMING RGNL (RIW)

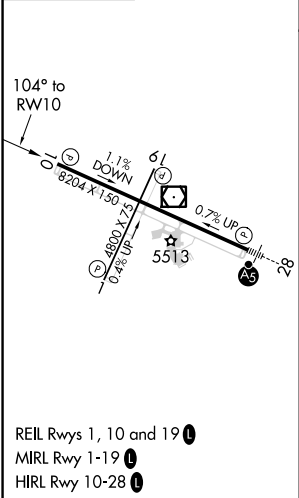
**⚠** DME/DME RNP-0.3 NA. When local altimeter setting not received, use Lander altimeter setting and increase all DA 54 feet and all MDA 60 feet, and increase LPV and LNAV/VNAV all Cats visibility ¼ mile and increase LNAV Cat C/D visibility ½ mile. Baro-VNAV and VDP NA when using Lander altimeter setting. Rwy 10 helicopter visibility reduction below ¾ SM NA. For uncompensated Baro-VNAV systems, LNAV/VNAV NA below -27°C (-16°F) or above 48°C (118°F).

MISSED APPROACH: Climb to 8600 direct DONVY and hold.

ASOS <b>121.425</b>	SALT LAKE CENTER <b>133.25 285.6</b>	UNICOM <b>122.8 (CTAF) 0</b>
------------------------	---	---------------------------------



ELEV 5516	<b>D</b>	TDZE 5516
-----------	----------	-----------



7 NM Holding Pattern				8600	DONVY
7900 ← 284° 104° →				6800	
GP 3.00° TCH 50					
6.1 NM				2.7 NM	1.2 NM
CATEGORY	A	B	C	D	
LPV DA	5902-1¼		386 (400-1¼)		
LNAV/VNAV DA	5965-1½		449 (500-1½)		
LNAV MDA	5940-1	424 (500-1)	5940-1¼	424 (500-1¼)	
<b>C</b> CIRCLING	6000-1	484 (500-1)	6000-1½	6120-2	604 (700-2)

NW-1, 07 AUG 2025 to 04 SEP 2025

NW-1, 07 AUG 2025 to 04 SEP 2025