

VOR/DME FAY  
**114.85**  
Chan **95(Y)**

APP CRS  
**058°**

Rwy Idg  
TDZE **189**  
Apt Elev **189**

FAYETTEVILLE RGNL/GRANNIS FLD (FAY)

VOR RWY 4

DME required.

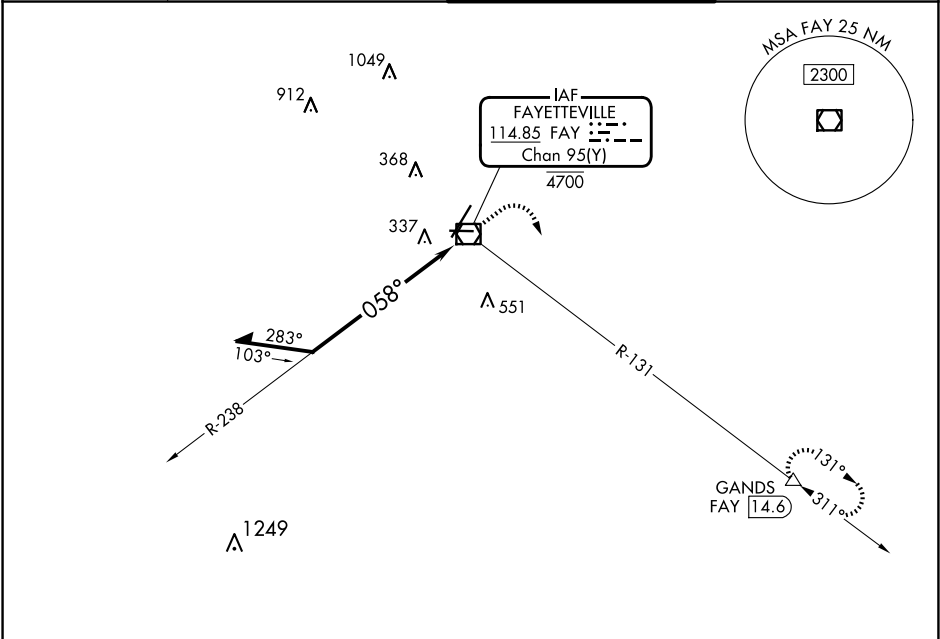
Rwy 4 helicopter visibility reduction below RVR 4000 NA.

For inop ALS, increase S-4 Cts A/B visibility to RVR 5500.

MALSR

MISSED APPROACH: Climb to 1100 then climbing right turn to 3000 on FAY VOR/DME R-131 to GANDS/FAY 14.6 DME and hold.

ATIS <b>121.25</b>	FAYETTEVILLE APP CON <b>133.0 290.25</b>	FAYETTEVILLE TOWER <b>118.3 269.2</b>	GND CON <b>121.7 348.6</b>
-----------------------	---	--	-------------------------------



ALTERNATE MISSED APCH FIX

FAYETTEVILLE  
114.85 FAY  
Chan 95(Y)

Remain within 10 NM

FAY VOR/DME  
4700

2100

238°

058°

FAY 1.9

1.5 NM

0.4

1100

3000

GANDS

FAY R-131

CATEGORY	A	B	C	D
S-4	720/40	531 (600-¾)	720/55	531 (600-1)
CIRCLING	720-1	531 (600-1)	860-2 671 (700-2)	860-2¼ 671 (700-2¼)

ELEV 189

TDZE 189

TWR 252

01

28

770° X 150

4801 X 150

058°

HIRL Rwy 4-22

MIRL Rwy 10-28

REIL Rws 10, 22, and 28