

FAYETTEVILLE, NORTH CAROLINA

AL-690 (FAA)

24081

VOR/DME FAY <u>114.85</u> Chan 95 (Y)	APP CRS 198°	Rwy Idg 6413 TDZE 180 Apt Elev 189
---	------------------------	---

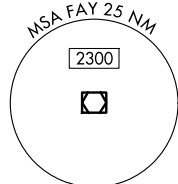
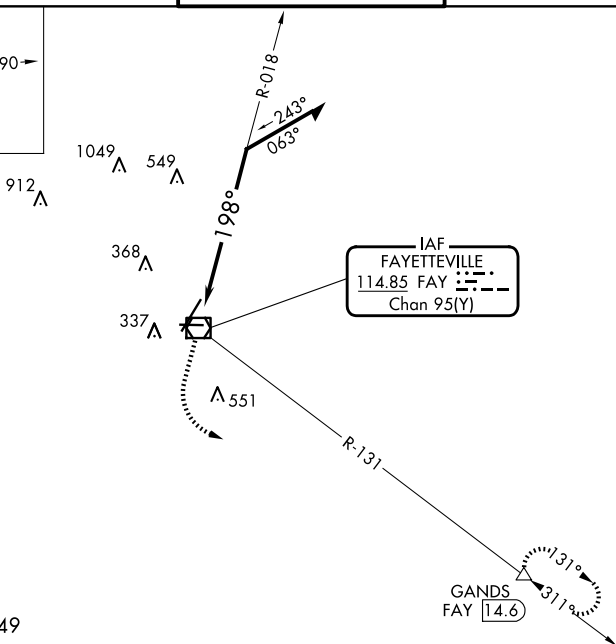
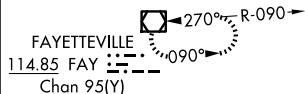
VOR RWY 22
FAYETTEVILLE RGNL/GRANNIS FLD (FAY)

DME required.

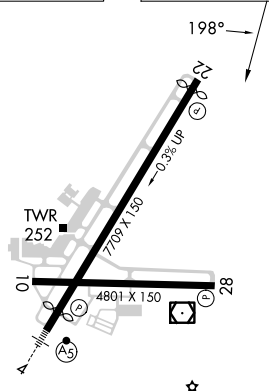
MISSED APPROACH: Climb to 1300 then climbing left turn to 3000 on heading 100° and on FAY VOR/DME R-131 to GANDS/FAY 14.6 DME and hold.

ATIS 121.25	FAYETTEVILLE APP CON 133.0 290.25	FAYETTEVILLE TOWER 118.3 269.2	GND CON 121.7 348.6
----------------	--------------------------------------	-----------------------------------	------------------------

ALTERNATE MISSED APCH FIX



ELEV 189	D	TDZE 180
----------	----------	----------



HIRL Rwy 4-22
MIRL Rwy 10-28
REIL Rwy 10-28 and 22

FAYETTEVILLE, NORTH CAROLINA

Amdt 8 14JUL22

FAYETTEVILLE RGNL/GRANNIS FLD (FAY)

34°59'N-78°53'W

VOR RWY 22

SE-2, 07 AUG 2025 to 04 SEP 2025

SE-2, 07 AUG 2025 to 04 SEP 2025