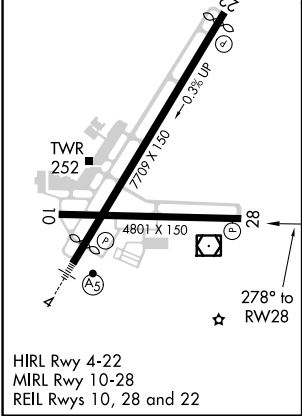
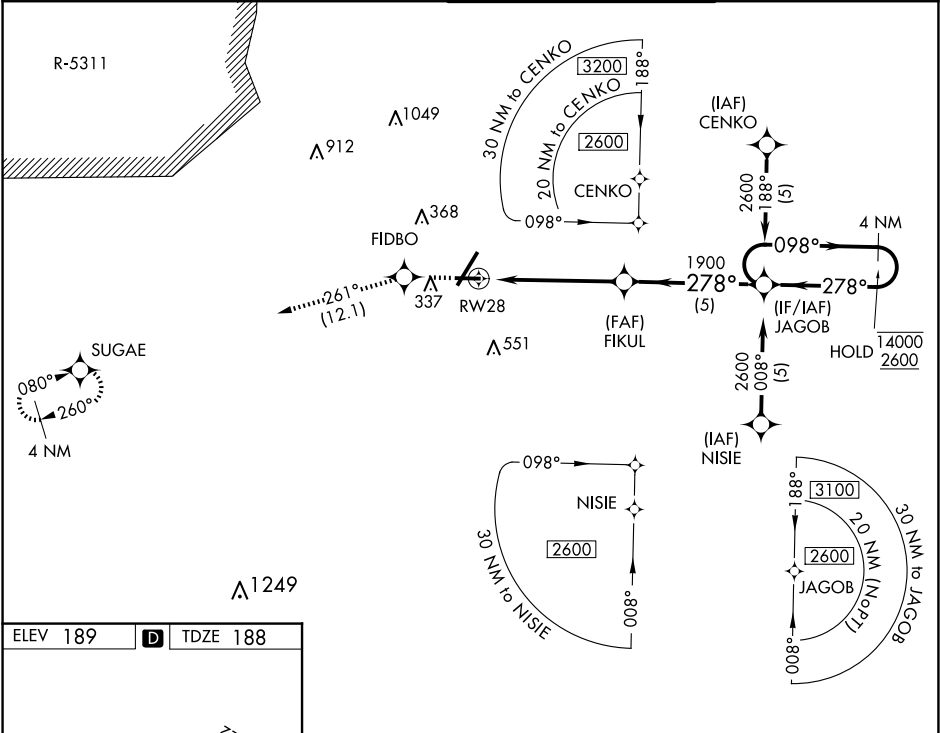


APP CRS	Rwy Idg	4801
278°	TDZE	188
	Apt Elev	189

RNAV (GPS) RWY 28
FAYETTEVILLE RGNL/GRANNIS FLD (FAY)

RNP APCH.	MISSED APPROACH: Climb to 2600 direct FIDBO and on 261° track to SUGAE and hold.
<div><div></div><div></div></div> <div>For uncompensated Baro-VNAV systems, LNAV/VNAV NA below -10° C or above 54°C.</div>	

ATIS 121.25	FAYETTEVILLE APP CON 133.0 290.25	FAYETTEVILLE TOWER 118.3 269.2	GND CON 121.7 348.6
----------------	--------------------------------------	-----------------------------------	------------------------



2600	FIDBO	tr 261°	SUGAE	4 NM Holding Pattern
*LNAV only.				
*1.2 NM to RW28				
RW28				
FIKUL 1900				
JAGOB				
278° 1900				
098° 14000				
278° 2600				
GP 3.00° TCH 35				
CATEGORY	A	B	C	D
LNAV/VNAV DA	500-1¼ 312 (400-1¼)			
LNAV MDA	600-1 412 (500-1)		600-1¼ 412 (500-1¼)	
<div></div> CIRCLING	640-1¼ 451 (500-1¼)	660-1¼ 471 (500-1¼)	860-2 671 (700-2)	860-2¼ 671 (700-2¼)